



# fresh

Your Weekly Source for City News and Information

## Public Meetings Next Week:

- None

Visit our website

Join us on Nextdoor



## April 18, 2023 City Council Meeting Summary

### At the City Council meeting on April 18th, the City Council:

- Received a presentation from Washington County Commissioners Gary Kriesel and Stan Karwoski on the CSAH 13/Inwood Ave. Phase 2 project
- Accepted Bids and Awarded Contract for the 2023 Street Improvements
- Approved Cardinal Ridge Design Alternative option 1
- Authorized Preliminary Design and Feasibility Report for the 2024 Street and Utility Improvements
- Received 1<sup>st</sup> Quarter 2023 Dashboards and Financials

### On the Consent Agenda, the City Council:

- Approved Payment Disbursements
- Approve City Center/Public Works Pay Request #15
- Accept Donation of AEDs from Washington County Sheriff's Office
- Authorize Mutual Aid Agreement between the City of Lake Elmo Fire Department and the Fire Departments of St. Croix County, Wisconsin and Washington County, Minnesota



### City Receives Donated AED Units

Huge thank you to Sgt. Erickson and the Washington County Sheriff's Department for obtaining grant funds to purchase 9 new automated external defibrillators (AEDs) for the City.

# Temporary Debris Management Site

## Belwin Conservancy

15601 Hudson Road North | Lakeland, MN



Available to Washington County residents only



# BELWIN



### Temporary Tree Debris Drop-off Site

A temporary drop-off site has opened at Belwin Conservancy's Lucy Winton Bell Athletic Fields for tree debris caused by the recent ice/snowstorm. The site will be open through May 31. The site is free and open to residents only. (No business waste.)

The site will accept wood waste from storm damage only. No root balls, stumps, yard waste, or grass clippings.

#### Location:

Belwin Conservancy's Lucy Winton Bell Athletic Fields  
15601 Hudson Rd. N. | Afton, MN 55001

Hours: Sundays, Wednesdays, Fridays, Saturdays from 8 a.m. to 2 p.m.

The site will be closed on Saturday, May 20 due to an event.

Learn more: [WashCoRecycles.com/YardWaste](http://WashCoRecycles.com/YardWaste) | 651-275-7475

---

### CSAH 13/Ideal Avenue Project

This week Washington County Commissioners Gary Kriesel and Stan Karwoski presented the city with a plaque commemorating the ribbon

cutting at the completion of the CSAH 13 (Ideal Avenue) Phase 2 project. This project brought many upgrades to the area, including turn lanes and a paved trail.



## Lake Elmo Arbor Day Celebration

Saturday April 29<sup>th</sup>, 2023



In Celebration of Arbor Day, the City of Lake Elmo 's Public Works is sponsoring a Tree Giveaway on April 29<sup>th</sup> from 9:00am – 11:00am at Lake Elmo Public Works Building 3445 Ideal Ave. N .

\*Please bring your own plastic bags for transporting the bare root trees. \*

[www.arborday.org](http://www.arborday.org)



Join us for the annual Arbor Day celebration and tree giveaway! Lake Elmo residents (I.D. required) are eligible to receive one free tree per person. This year we also have free mulch available in self service piles. Please bring buckets or a trailer to load the mulch.



**FOR IMMEDIATE RELEASE:**  
**April 20, 2023**

**Contact:** Alex Carlson  
Public Affairs Manager  
(612) 750-9960  
acarlson@mmcd.org

## **Mosquito Control activity has begun in your community**

*Metropolitan Mosquito Control District trucks, helicopters, and staff will be out in neighborhoods and parks this spring and summer working to reduce mosquito-borne disease and annoyance.*

SAINT PAUL - After months of heavy snow and below average temperatures, a brief warm period in mid-April this year brought mosquito larvae out. Field staff from the Metropolitan Mosquito Control District monitor wetlands in the early Spring in search of the first larva of the year. In each of the past three years, the first larva was found in mid-March, but in 2023 it wasn't until April 10th that larva was collected - during a week of unseasonably warm air temperatures. Since then mosquito larvae have been found in every county in the metro and the mosquito control season is officially underway.

The Metropolitan Mosquito Control District (MMCD) will be conducting surveillance and treatment activities in your community to reduce the risk of disease and annoyance in an environmentally-sensitive manner. Each year field staff at MMCD monitors and treats wetlands that breed mosquitoes with a fleet of trucks and helicopters. Many of our seasonal staff begin working in April and residents of the seven county metro area may notice the green or white trucks with the MMCD logo or staff on bikes or on foot wearing brightly colored "Mosquito Control" shirts.

At times MMCD employees may need to cross private property for access to check and treat areas for mosquito larvae. MMCD management asks the community to please stay several feet away from field staff and ensure children and pets are kept at a distance. If you have questions about mosquito control activities or concerns about an employee, please call the MMCD front desk at (651) 645-9149 or visit [MMCD.org](http://MMCD.org).

- Helicopter larval treatments - applying control materials to a wetland via helicopter.
- Catch basin treatments - applying control materials to neighborhood catch basins.
- Setting or collecting traps - surveillance helps MMCD determine where and what types of mosquitoes are active.

The control materials and methods used by MMCD are regularly tested for safety and only applied when surveillance indicates they would be effective. The active ingredients are specifically designed to target mosquito larvae or adults with minimal impacts on non-target insects. The control materials are not harmful to people, pets, or wildlife. For a complete list of control materials used, please visit [MMCD.org](http://MMCD.org).

Scheduled treatments including planned helicopter activity are posted on the MMCD website and on our Twitter page [@metromosquito](https://twitter.com/metromosquito). The Metropolitan Mosquito Control District appreciates your support. For information about our programs or for tips on how to reduce mosquitoes near your home, please visit [MMCD.org](http://MMCD.org).



## Help Support Lions Park for the 2023 Season!

We hope you will consider supporting the Lions Park ball field by purchasing a sign for the season that will hang on the outfield fencing. Advertising your business and/or cause with a vintage style sign helps create a vintage feel at the ball field and shows your support for this amenity that has benefitted our youth and community for decades. Your advertising funds are used solely for improvements to the Lions Park ball field area; none of the funds are used for general city expenses.

To participate, all you need to do is send your contact information and a \$500 check payable to the City of Lake Elmo-Lions Park Sign 2023, 3880 Laverne Ave N, Lake Elmo, MN 55042 by April 30, 2023. We are not able to take payment by credit card at this time. After it is received, staff will contact you and support you through the process of producing the sign and getting it placed for the season. The cost of designing and producing the sign is included in the \$500 fee.

We hope that you will consider a sign subscription at Lions Park for the 2023 season! Again, thank you for your support of this community asset.

### Park and Court Reservations

With Spring around the corner, we are in high gear with park reservations. To access all reservations, please visit the website via the link below and use the drop down menu on the top right side to move between park calendars. The city's park use policy can also be found on the reservation page.

[Park Calendars](#)



### Compost Bin and Rain Barrel Sale

Washington County is excited to partner with the Recycling Association of Minnesota to sell discounted compost bins and rain barrels to Washington County residents. Home Composter compost bins are \$56 and Rain Catcher rain barrels are \$70. Pre-ordered items must be picked-up at the Environmental Center within 90 days of purchase.

[Order online](#)

**Reduce-Reuse-Recycle!**





## Disposal Directory

Disposal Directory English Share

Directory Need help?

Type the name of a waste item and we'll tell you how to recycle or dispose of it.

Popular Searches

-  Mattresses & box springs
-  Furniture
-  Carpet & padding
-  Small household electronics

It is that time of year again when we start thinking about spring cleaning. Are you sure about what is trash and what can be recycled, and where to take it? Washington County has a new interactive disposal directory located here: [Disposal Directory](#) Try it out! It is a great tool for identifying what and where you can donate, recycle, or dispose of unwanted items.

establish  
SALON



WONDERING WHAT YOU CAN DO FOR EARTH DAY?

**WE'VE GOT YOU COVERED!**

**Get your Lake Elmo sweatshirt AND make a local impact at the same time.** establish salon is teaming up with Washington County Parks to plant trees in Lake Elmo Park Reserve. All proceeds of this year's Moss Green sweatshirt will purchase the trees for planting. Because for Earth Day, it's all about coming together as a community and **taking care of home!**

establish  
SALON

3515 LAKE ELMO AVENUE N  
LAKE ELMO, MN 55042  
(651) 770 - 3515

Washington  
County  
PARKS

**IN-STORE**  
AT ESTABLISH SALON  
3515 LAKE ELMO AVENUE N

**ONLINE**  
ESTABLISHSALON.COM OR  
LAKEWATERCLOTHING.COM

## Get involved!

The City of Lake Elmo is seeking interested residents to serve on the Parks Commission and Economic Development Authority (EDA). The Parks Commission meets 1 time per month and the EDA meets quarterly. No experience is necessary! Application and more information is available on the City's website: [click here](#) , or contact City Administrator Kristina Handt for more information: [khandt@lakeelmo.org](mailto:khandt@lakeelmo.org).



## Report Streetlight Outage

Xcel Energy maintains streetlights on public streets in Lake Elmo. If you notice a streetlight that is burned out or malfunctioning, please use the link below to report the issue. It's helpful to note the location with nearest cross streets and the pole number if you are on foot and able to make note of it.

**[Click Here to Report Streetlight Outage](#)**

## MPCA Utilizing New Technology to Clean Water in Lake Elmo

Minnesota Pollution Control Agency has placed equipment at Tablyn Park that utilizes a new technology to remove contamination from groundwater. Click below to view a KSTP news story featuring an interview with Councilmember Jeff Holtz.

[KSTP Story](#)



**The Brookfield building at 3880 Laverne Avenue is closed and under construction. All City Services are available at City Hall, 3800 Laverne Avenue**

**Please drive slowly and watch for construction activity**



Running a company of any size can be a challenge. For a small business owner, it can be a lonely one too. Wouldn't it be helpful to have a group of peers where you have a forum for exchange of information, ideas, insights, and perspectives?

That's what our WHAT'S NEXT CEO Roundtable is all about - a place where you can work through your specific business issues with fellow small business owners. This is not a networking event. It is a peer-to-peer group that provides a secure environment for open, confidential discussions about concerns, problems, and opportunities a member may be facing.

Our What's Next CEO Roundtable is a professional business meeting consisting of small business Presidents, Owners, and CEOs from Washington County. The group will consist of 10 to 12 members from non-competing companies.

The purpose of the group is to provide a gathering for the exchange of information, ideas, insights, and perspectives. All meetings are completely confidential which provides a secure environment for open discussions about concerns, problems, and opportunities a member may be facing. On occasion, guest speakers will present ideas and solutions to roundtable members.

The value of joining and attending our monthly CEO Roundtable is to learn from peer-to-peer experiences through a facilitated roundtable conversation. You benefit by learning from each other's achievements and mistakes.

For more information click here: [What's Next CEO](#)

---



The Sally Manzara Interpretive Nature Center is open every day  
Visit <https://sminc-lake-elmo.org/> for details.



The Sally Manzara Interpretive Nature Center in Lake Elmo's Sunfish Lake Park is operated by a non-profit organization for the benefit of the entire community. We offer programs and events for people of all ages, and have "adopted" the Park in the City's program. This work is all funded by donations. Thank you for your support!

April is bee season at the Sally Manzara Interpretive Nature Center! You may not see them, but bees are already active in their hives. The queen is producing eggs and repopulating the hive, and the bees that have wintered over are moving around, eating honey, getting ready for the warm weather. If you've ever thought of beekeeping, we'll be running a workshop later in the month for beginning beekeepers.

- **Earth Day Celebrations:** This year's Earth Day activities at the Sally Manzara Interpretive Nature Center are being held in memory of John Neitge, who organized last year's 3-Saturday Earth Day in Sunfish Lake Park and was a dedicated member of SMINC, but sadly died of leukemia in December 2022.
  - April 22<sup>nd</sup> - Sow seeds for restoration of ground cover in the buckthorn-cleared areas.
  - April 29<sup>th</sup> - Adopt-a-Tree with planting of Bur Oak seedlings.
- **Tree Medicine Seminar** We are excited to welcome Paul Red Elk to the SMINC on Saturday, May 21, from 9 to 4 for a seminar on Tree Medicine and Spirituality. For more information, including price and payment info, see the flyer on the next page.
- **May is Turtle Month at SMINC:** On Wednesday, May 17, the Center will host Nature Educator Misi Stine's "Be a Turtle Hero" presentation, at 7 p.m., as part of their adult education series. The weekend before, Saturday May 13 and Sunday May 14, as part of the Center's family-friendly Interpretive Drop-In Series, Naturalists and educators will be on hand to teach visitors all about turtles, and the turtle species that can be found at Sunfish Lake Park.
- We are so excited for our upcoming Summer Camps! It is not too early to register, sign up now before spots are full. <https://sminc-lake-elmo.org/summer-camp-registration/>





# TREE MEDICINE AND SPIRITUALITY



By Paul Red Elk

**Save the date Saturday May 21<sup>th</sup>, 2023!**

**Where:** Sally Manzara Interpretive Nature Center Lake Elmo Minnesota

**Time:** 9:00 – 4:00 pm

**Space is limited. So please register early. Please register with Paul Red Elk only [traditionallakotamedicineman@gmail.com](mailto:traditionallakotamedicineman@gmail.com)**

Please pay with check, cash only. The address is Paul Red Elk 2356 Cottage Dr. Stillwater, MN. 55082

**(no registration on nature center website [www.sminc-lake-elmo.org](http://www.sminc-lake-elmo.org))**

**Registration: Class Cost is \$90.00 if paid in full by May 1st, 2023, \$100.00 if later.**

**If you need to cancel, please do so before May 18<sup>th</sup>, 2023. For a refund.**

Please bring something to eat, something to drink. Weather permitting there will be a tree walk. Wear comfortable shoes and clothing.

Are you aware there are over 43 different tree medicines? I have been collecting this lost information for many years, from American Indian medicine people, spiritual advisors across the upper mid-west of the United States, Southern Canada. This tree medicine knowledge has never been taught or shared. Most trees have wonderful medicine to give, spiritual connections, and personal protection.

## **Deciduous Birch, Aspens. Coniferous Pines. Tree Medicines and Spirituality**

Paper Birch  
River Birch  
Yellow Birch  
White Birch  
Gray Birch

Big Tooth Aspen  
Quaking / Trembling Aspen  
White Poplar

Jack Pine  
White Pine  
Red Pine (Norway)

# SALLY MANZARA INTERPRETIVE NATURE CENTER SUMMER CAMPS 2023



The Sally Manzara Interpretive Nature Center is located next to Sunfish Lake Park in Lake Elmo, Minnesota. The park offers 284 acres of natural area and over 8 miles of trails through forest, wetlands, and prairie.

## GET YOUR KIDS OUTDOORS EXPLORING NATURE THIS SUMMER!

### SUMMER CAMPS

**Monday - Thursday**  
**9:00 a.m. - noon**

Small group, outdoor camps in nature run by experienced instructors and include interpretive education, games, crafts, free play and hikes.

#### **Wildflower Painting Camp**

Ages 7-10, June 13, 15, 20, 22

#### **Critter Camp #1**

Ages 5-7, June 26-29

#### **Outdoor Adventures Camp**

Ages 6-8, July 10-13

#### **Nature Drama Camp**

Ages 9-12, July 24-27

#### **Bees & Butterflies Camp**

Ages 6-8, July 31-August 3

#### **Critter Camp #2**

Ages 5-7, August 14-17

### WONDER WEDNESDAYS

**Wednesdays**

**9:00 a.m. - 2:00 p.m.**

**Ages 5-8**

Our one day Wonder Wednesdays Camps are small group, outdoor camps in nature run by experienced instructors and will offer interpretive education, crafts, hikes and free play.

**June 7** - All About Birds

**June 21** - Animal Superheroes

**July 5** - Water Play

**July 19** - Raptors

**August 9** - Nature Art

**August 23** - Honeybees



### LITTLE EXPLORERS

**Mondays**

**9:30 a.m. - 11:30 a.m.**

**Ages Birth-5**

Adults and their child/ren will be guided by a Pre-K Educator in an outdoor welcome circle focused on rotating themes and followed with open-ended play materials allowing children to explore their own interests in nature.

**June 5** - All About Birds

**June 19** - Animal Superheroes

**July 3** - Water Play

**July 17** - Raptors

**August 7** - Nature Art

**August 21** - Honeybees

Camp information and registration: [sminc-lake-elmo.org/summer-camp-registration/](https://sminc-lake-elmo.org/summer-camp-registration/)

For more information email [camps@sminc-lake-elmo.org](mailto:camps@sminc-lake-elmo.org) or email Programs Coordinator Ami Voeltz at [ami.voeltz@sminc-lake-elmo.org](mailto:ami.voeltz@sminc-lake-elmo.org).



Sally Manzara Interpretive Nature Center is operated by Friends of Lake Elmo's Sunfish Lake Park, a 501(c)(3) nonprofit.

**651-408-2838 | e-mail: [info@sminc-lake-elmo.org](mailto:info@sminc-lake-elmo.org) | [sminc-lake-elmo.org](https://sminc-lake-elmo.org)**

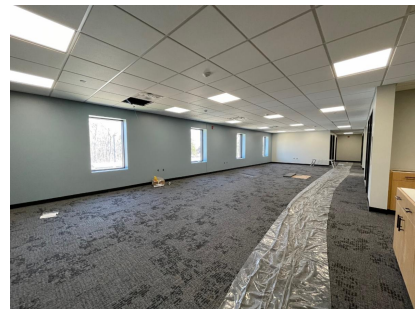
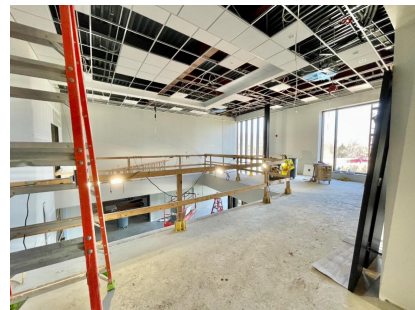


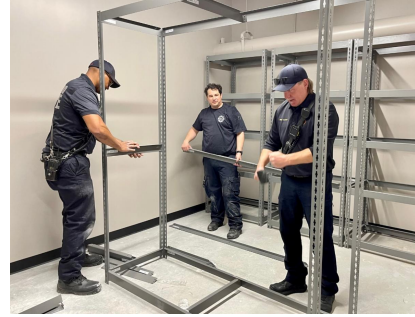
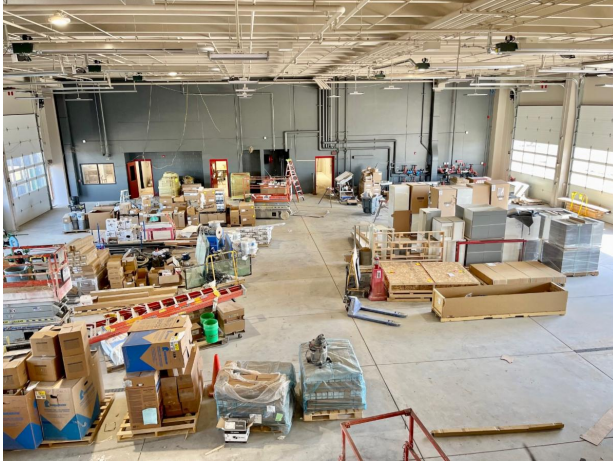
**Lake Elmo Library**  
3537 Lake Elmo Avenue N  
Lake Elmo MN 55042  
651-275-8515  
WashCoLib.org

**Hours:**  
Monday: 10 a.m. - 4 p.m.  
Tues., Wed., Thurs.: 12-8 p.m.  
Friday: 10 a.m. - 4 p.m.  
Saturday: 10 a.m. - 2 p.m.



## Public Facilities Project Update





Finishing work on the interior of the City Center building included delivery of the appliances and continued work on flooring and tile. On the exterior, paint colors were tested on the building and preparations have begun for parking lot pavement. Firefighters worked on assembling shelving in fire storage areas in their spare time. As you can see from all the building materials in the fire bays, there is a lot of work to be done but crews are making great progress toward our anticipated occupancy date in early summer.

---

Additional information is available on the City's [City Center](#)



- 1 New City Hall Entrance
- 2 New Fire Station Expansion
- 3 Council Chambers/Community room addition
- 4 Parking
- 5 Fire Department Parking
- 6 City Hall/Sheriff
- 7 Laverne Avenue

LEO A DALY

## CITY OF LAKE ELMO COMBINED CITY HALL & PUBLIC SAFETY FACILITY

The new Lake Elmo City Hall / Public Safety Facility combines City Hall staff and functions, the entire Fire Department, and a satellite office for the Washington County Sheriff's department. This co-location involves renovating and expanding the City-owned Brookfield Office building to concentrate civic resources into a single structure at the historic core of the city. In addition, the Public Works facility will also be expanded to accommodate City growth and expanded service needs.



**TOTAL ANTICIPATED PROJECT COST:** \$14,600,000  
**DESIGN COMPLETION:** Late summer 2021  
**CONSTRUCTION COMPLETION:** Fall of 2022



City of Lake Elmo | 3800 Laverne Avenue North, Lake Elmo, MN 55042

[Unsubscribe](mailto:unsubscribe@lakeelmo.org) [jjohnson@lakeelmo.org](mailto:jjohnson@lakeelmo.org)

[Update Profile](#) | [Constant Contact Data Notice](#)

Sent by [jjohnson@lakeelmo.org](mailto:jjohnson@lakeelmo.org) powered by



Try email marketing for free today!