



fresh

Your Weekly Source for City News and Information

Public Meetings Next Week:

- Parks Commission Monday, March 20th, 6:30 p.m.
- City Council Special Meeting Tuesday, March 21st, 6:15 p.m.
- City Council Meeting Tuesday, March 21st, 7:00 p.m.



[Visit our website](#)

[Join us on Nextdoor](#)





Our Mission is to Provide Quality Public Services in a Fiscally Responsible Manner in Partnership with our Community.

NOTICE OF MEETING

**City of Lake Elmo Parks Commission
3800 Laverne Avenue North
March 20th 2023**

AGENDA

1. Call to Order
2. Pledge of Allegiance
3. Approve Agenda
4. Approve Minutes
 - a) February 22, 2023
5. Public Comment
6. City Dog Park
7. Baseball Field Improvement Options
8. Communication
9. Adjourn

****Note: Every effort will be made to accommodate person or persons that need special considerations to attend this meeting due to a health condition or disability. Please contact the Lake Elmo City Clerk if you are in need of special accommodations.*



Our Mission is to Provide Quality Public Services in a Fiscally Responsible Manner in Partnership with our Community

NOTICE OF MEETING

**City Council Special Meeting
Tuesday, March 21, 2023 6:15 P.M.
City of Lake Elmo | 3800 Laverne Avenue North**

AGENDA

- A. CALL TO ORDER
- B. PLANNING COMMISSION INTERVIEWS
 1. Michele Bohlig 6:15pm
 2. Colin O'Brien 6:30pm
 3. Dennis Geffre Jr 6:45pm
- C. ADJOURN

NOTICE OF MEETING

City Council Meeting

Tuesday, March 21, 2023 7:00 P.M.

City of Lake Elmo | 3800 Laverne Avenue North

AGENDA

A. Call to Order/Pledge of Allegiance

B. Approval of Agenda

C. Approval of Minutes

1. February 15, 2023; February 21, 2023; March 7, 2023

D. Public Comments/Inquiries

E. Consent Agenda

2. Approve Payments and Disbursements
3. Approve Hire of Administrative Services Director
4. Approve Sale of Excess and Retired Equipment
5. 9450 Hudson Development Agreement
6. Approve City Center/Public Works Pay Request #14
7. Accept Sanitary Sewer and Watermain Improvements and Approve Security Reduction for Union Park 2nd Addition
8. Accept Sanitary Sewer and Watermain Improvements and Approve Security Reduction for Union Park West Addition
9. Approve Pay Request No. 8 for Water Tower No. 3

F. Regular Agenda

10. 10755 50th St CEF Solar Farm Conditional Use Permit – Public Hearing – *Resolution 2023-021*
11. Drake Motor Partners Preliminary PUD and Preliminary Plat – *Resolution 2023-023*
12. Landucci Construction Preliminary PUD and Preliminary Plat – *Resolution 2023-024*
13. Landscaping Requirements Top Soil Text Amendment – *Ordinance 2023- 06; Resolution 2023-022*
14. Planning Commission Appointment

G. Council Reports

H. Staff Reports

I. Adjourn



SF 2047 Mayor Charles Cadehead Lake Elmo
Issuance authorization and modification prohibition of certain water use permits SENATE

Senate Hearings

Last week Mayor Cadehead testified at a hearing in the MN Senate regarding SF 2047, a Bill that includes the City's request for a permit to construct and operate a new well. The full video can be viewed by clicking the link here: [Video](#)



**Public invited to open house on Highway 36/Lake Elmo
Avenue improvements April 19**

The public is invited to an open house to review and provide feedback on design alternatives that will improve the intersection of Highway 36 and Lake Elmo Avenue, or County Highway 17.

The open house will be 4 to 6 p.m. Wednesday, April 19, at River Valley Church. The church is at 5900 Lake Ave. N., Lake Elmo.

The project will seek to overcome the current deficiencies at the intersection, and improve its safety and capacity. Design alternatives will also improve bicycle, pedestrian, and ADA facilities in this area.

This is the second open house in the planning process for intersection improvements. Information from the previous open house and past newsletters may be found on the Washington County website at www.co.washington.mn/LakeElmoAvenue.



Help Support Lions Park for the 2023 Season!

We hope you will consider supporting the Lions Park ball field by purchasing a sign for the season that will hang on the outfield fencing. Advertising your business and/or cause with a vintage style sign helps create a vintage feel at the ball field and shows your support for this amenity that has benefitted our youth and community for decades. Your advertising funds are used solely for improvements to the Lions Park ball field area; none of the funds are used for general city expenses.

To participate, all you need to do is send your contact information and a \$500 check payable to the City of Lake Elmo-Lions Park Sign 2023, 3880 Laverne Ave N, Lake Elmo, MN 55042 by April 30, 2023. We are not able to take payment by credit card at this time. After it is received, staff will contact you and support you through the process of producing the sign and getting it placed for the season. The cost of designing and producing the sign is included in the \$500 fee.

We hope that you will consider a sign subscription at Lions Park for the 2023 season! Again, thank you for your support of this community asset.

Reduce-Reuse-Recycle!

It is that time of year again when we start thinking about spring cleaning. Are you sure about what is trash and what can be recycled, and where to take it? Washington County has a new interactive disposal directory located here: [Disposal Directory](#)





Disposal Directory

Disposal Directory English Share

Directory Need help?

Type the name of a waste item and we'll tell you how to recycle or dispose of it.

Popular Searches

-  Mattresses & box springs
-  Furniture
-  Carpet & padding
-  Small household electronics

Try it out! It is a great tool for identifying what and where you can donate, recycle, or dispose of unwanted items.



EPA Announces new PFAS Standards

Councilmember Jeff Holtz spoke with WCCO this week regarding the EPA announcement of new PFAS standards. A link to the video of the story that aired on WCCO can be accessed below.

[WCCO](#)

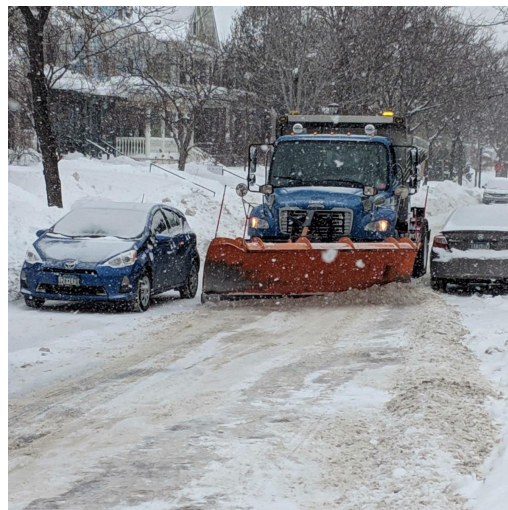
Get involved!

The City of Lake Elmo is seeking interested residents to serve on the Parks Commission and Economic Development Authority (EDA). The Parks Commission meets 1 time per month and the EDA meets quarterly. No experience is necessary! Application and more information is available on the City's website: [click here](#), or contact City Administrator Kristina Handt for more information: khandt@lakeelmo.org.



Winter Parking

Please remember that the City of Lake Elmo has a winter parking ordinance that **prohibits parking on city streets from November 1st through March 31st between 2:00 a.m. and 7:00 a.m.** This gives crews a window of time for clearing streets curb to curb more efficiently. Thank you for your understanding and cooperation!



Report Streetlight Outage

Xcel Energy maintains streetlights on public streets in Lake Elmo. If you notice a streetlight that is burned out or



malfunctioning, please use the link below to report the issue. It's helpful to note the location with nearest cross streets and the pole number if you are on foot and able to make note of it.

Click Here to Report Streetlight Outage

MPCA Utilizing New Technology to Clean Water in Lake Elmo

Minnesota Pollution Control Agency has placed equipment at Tablyn Park that utilizes a new technology to remove contamination from groundwater. Click below to view a KSTP news story featuring an interview with Councilmember Jeff Holtz.

[KSTP Story](#)



resourceful. naturally.
engineering and environmental consultants



FOR IMMEDIATE RELEASE

Date: March 8, 2023
Contact: Josh Phillips
Barr Engineering Co.
4300 MarketPointe Drive, Ste 200
Minneapolis, MN 55435
P: 952-832-2723
E: JPhillips@barr.com

WASHINGTON COUNTY, MN LAKE LEVEL DRAWDOWNS

Beginning the week of March 13, 2023, the Valley Branch Watershed District will lower lake water levels along its watershed outlet system. This outlet system connects lakes in the northwest part of the watershed district to the St. Croix River. The great amounts of snow and rain this winter have resulted in high water content in the snowpack. The lowering of water levels will help prevent flooding during and after the spring snowmelt.

Those who use the lakes for fishing, snowmobiling, and other activities are cautioned that lowering the lakes could result in new open water areas, thin ice, and areas of weakened ice, especially at lake inlets and outlets.

All of the lake drawdown activities are in accordance with permits and lake level management plans approved by the Minnesota Department of Natural Resources. The spring snowmelt will return the lakes to their normal levels.

Water levels will be lowered at **Horseshoe Lake, Lake Elmo, Lake DeMontreville, Lake Olson, Lake Jane, Crombie Pond, Hedges Pond, Hedges Bog, and Long Lake**. These lakes and ponds are located in the West Lakeland Township, the City of Lake Elmo, the City of Pine Springs, and the City of Mahtomedi.

The City of Lake Elmo is on Nextdoor!

In an effort to reach as much of the community as possible we've joined Nextdoor. We will use our public agency page to post news and important updates for residents.

[Find us here!](#)



The Brookfield building at 3880 Laverne Avenue is closed and under construction. All City Services are available at City Hall, 3800 Laverne Avenue

Please drive slowly and watch for construction activity



Running a company of any size can be a challenge. For a small business owner, it can be a lonely one too. Wouldn't it be helpful to have a group of peers where you have a forum for exchange of information, ideas, insights, and perspectives?

That's what our WHAT'S NEXT CEO Roundtable is all about - a place where you can work through your specific business issues with fellow small business owners. This is not a networking event. It is a peer-to-peer group that provides a secure environment for open, confidential discussions about concerns, problems, and opportunities a member may be facing.

Our What's Next CEO Roundtable is a professional business meeting consisting of small business Presidents, Owners, and CEOs from Washington County. The group will consist of 10 to 12 members from non-competing companies.

The purpose of the group is to provide a gathering for the exchange of information, ideas, insights, and perspectives. All meetings are completely

confidential which provides a secure environment for open discussions about concerns, problems, and opportunities a member may be facing. On occasion, guest speakers will present ideas and solutions to roundtable members.

The value of joining and attending our monthly CEO Roundtable is to learn from peer-to-peer experiences through a facilitated roundtable conversation. You benefit by learning from each other's achievements and mistakes.

For more information click here: [What's Next CEO](#)

The Sally Manzara Interpretive Nature Center is open every day
Visit <https://sminc-lake-elmo.org/> for details.



The Sally Manzara Interpretive Nature Center in Lake Elmo's Sunfish Lake Park is operated by a non-profit organization for the benefit of the entire community. We offer programs and events for people of all ages, and have "adopted" the Park in the City's program. This work is all funded by donations. Thank you for your support!

What's happening at the SMINC?

- Trails are Open! Work with the heavy machinery is done for now. We removed and burned a lot of buckthorn from the park. All the bike trails are open now, with plenty of snowpack. Happy riding!
- Adult Education Classes: We have some great programming for the spring focused around bees and beekeeping. On Thursday, April 20, Beekeeper Karen Voy will share the basics of beekeeping and teach us how to get started. Upon completion of this presentation, attendees will have opportunities to sign up for more formal beekeeping workshops and will learn about opportunities for getting hands-on experience with the SMINC hives. Bring you calendars! Cost: \$10 per person, pre-registration is required. To sign up for this event go to: <https://sminc-lake-elmo.org/adult-education-presentation-series/>
- Summer Camp Spotlight: Wildflower Painting! June 13, 15, 20 & 22. See the poster on the next page for more details. It is not too early to register, sign up now before spots are full. <https://sminc-lake-elmo.org/summer-camp-registration/>





WILDFLOWER PAINTING CAMP

June 13, 15, 20, & 22

Tuesdays & Thursdays, 9:00am-Noon

7-10 year-olds will work with artist educator Brianna Seipel to learn to identify native plants and wildflowers through short hikes in the prairie. Campers will also learn basic principles of the color wheel and complementary colors while creating a piece of art to take home.

Please plan to wear clothes that can get messy. Aprons provided. \$25 supply fee applies.

The Sally Manzara Interpretive Nature Center is located next to Sunfish Lake Park in Lake Elmo, Minnesota. The park offers 284 acres of natural area and over 8 miles of trails through forest, wetlands, and prairie.



REGISTER TODAY: sminc-lake-elmo.org/summer-camp-registration/

Sally Manzara Interpretive Nature Center is operated by Friends of Lake Elmo's Sunfish Lake Park, a 501(c)(3) nonprofit.

651-408-2838 | e-mail: info@sminc-lake-elmo.org | sminc-lake-elmo.org



Lake Elmo Library

3537 Lake Elmo Avenue N
Lake Elmo MN 55042
651-275-8515
WashCoLib.org

Hours:

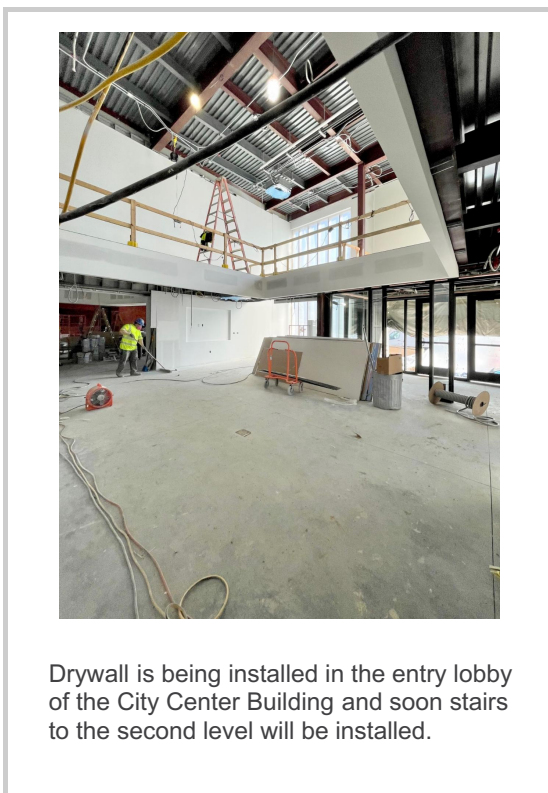
Monday: 10 a.m. - 4 p.m.
Tues., Wed., Thurs.: 12-8 p.m.
Friday: 10 a.m. - 4 p.m.
Saturday: 10 a.m. - 2 p.m.



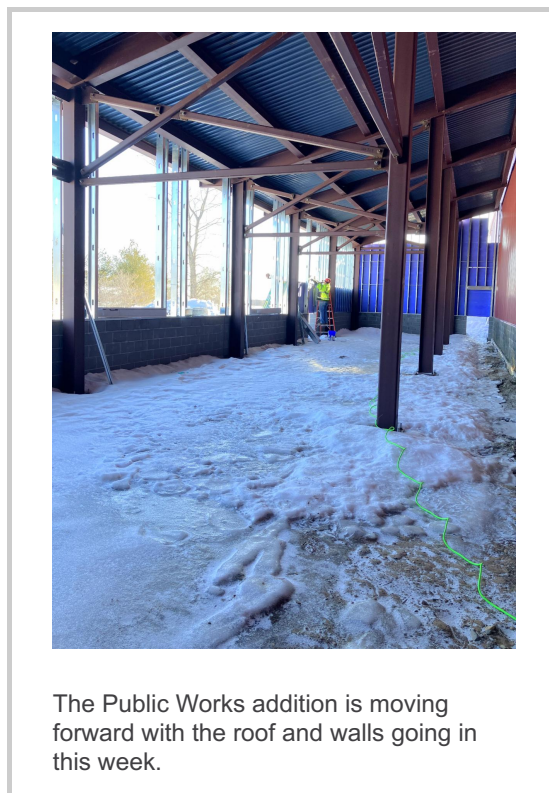
Public Facilities Project Update



Drywall installation is in full swing in the future council chambers.



Drywall is being installed in the entry lobby of the City Center Building and soon stairs to the second level will be installed.



The Public Works addition is moving forward with the roof and walls going in this week.

Additional information is available on the City's [City Center](#)



CITY OF LAKE ELMO COMBINED CITY HALL & PUBLIC SAFETY FACILITY

The new Lake Elmo City Hall / Public Safety Facility combines City Hall staff and functions, the entire Fire Department, and a satellite office for the Washington County Sheriff's department. This co-location involves renovating and expanding the City-owned Brookfield Office building to concentrate civic resources into a single structure at the historic core of the city. In addition, the Public Works facility will also be expanded to accommodate City growth and expanded service needs.



TOTAL ANTICIPATED PROJECT COST: \$14,600,000
DESIGN COMPLETION: Late summer 2021
CONSTRUCTION COMPLETION: Fall of 2022



City of Lake Elmo | 3800 Laverne Avenue North, Lake Elmo, MN 55042

[Unsubscribe](mailto:unsubscribe@lakeelmo.org) jjohnson@lakeelmo.org

[Update Profile](#) | [Constant Contact Data Notice](#)

Sent by jjohnson@lakeelmo.org powered by



Try email marketing for free today!