



fresh

Your Weekly Source for City News and Information

Public Meetings Next Week:

- None

[Visit our website](#)

[Join us on Nextdoor](#)





WATERING RESTRICTION CHANGES

On May 16th, 2023 council approved changes to the watering restriction ordinance to ensure the city's water system can support the domestic and fire protection demands.

Four Zones have been established. Properties in each zone are allowed two days a week to water.

Zone A waters Monday and Fridays

Zone B waters Tuesday and Fridays

Zone C waters Wednesday and Saturday

Zone D water Thursday and Sunday

No irrigating is allowed between the hours of 5 am and 5 pm

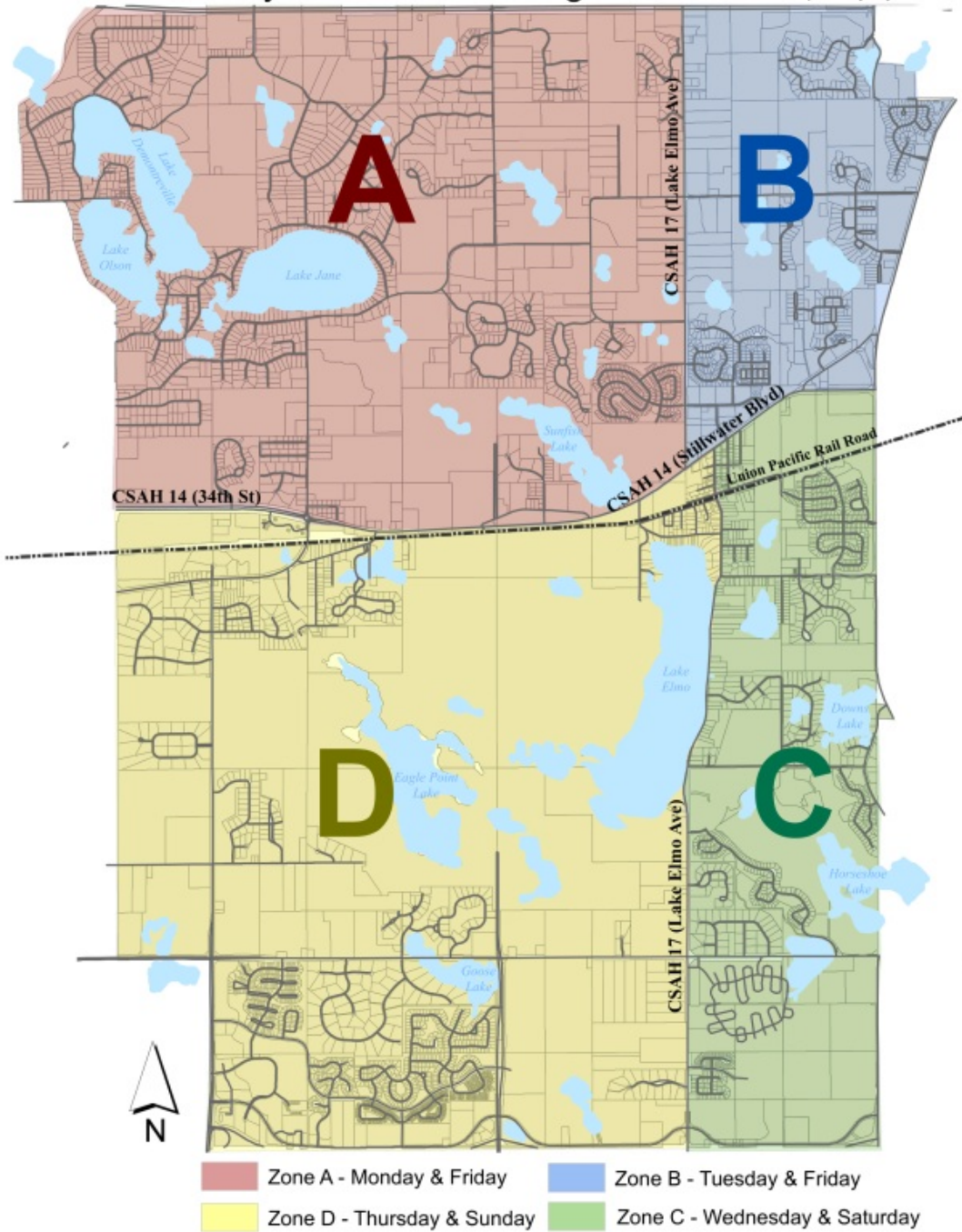
New sod waivers restrictions are reduced from 30 days to 15 days

Restrictions go into effect immediately

Questions call 651-747-3900

City of Lake Elmo Irrigation Zones

Map Date: May 2023
Map Made By: City of Lake Elmo



Water Rebate Program

The City of Lake Elmo, in partnership with the Metropolitan Council, is offering a rebate program for purchases of eligible water efficient products. The goal of the water efficiency grant program is to improve municipal water use. This funding has enabled Lake Elmo to provide a rebate to current water customers who replace existing devices with specified water efficient products. Qualifying purchases are eligible for a rebate on your water bill. More information is available on the City's website via the link below.

[Rebate](#)

Temporary Debris Management Site

Belwin Conservancy

Lucy Winton Bell Athletic Fields
15601 Hudson Road North | Lakeland, MN



Available to Washington County residents only



BELWIN



IMPORTANT MESSAGE REGARDING TEMPORARY DEBRIS MANAGEMENT SITE:

Next Wednesday, May 31st, will be the last day to utilize the temporary wood debris drop-off site at Lucy Winton Bell Athletic Fields at Belwin Conservancy. Remaining days and hours are as follows:

- Friday, May 26, 8:00am - 2:00pm
- Saturday, May 27, 8:00am - 2:00pm
- Sunday, May 28, 8:00am - 2:00pm
- Wednesday, May 31, 8:00am - 2:00pm

As a reminder, this site is available for Washington County residents only and is limited to wood waste from storm damage only. No root balls, stumps, yard waste, or grass clippings. Several commercial and residential drop-off sites remain available for the disposal of yard debris and waste after May 31st:

- Gertens, Denmark Township: 12119 70th St S.
- Rumpca Companies, Cottage Grove: 9600 Glendenning Rd.
- County Yard Waste Site, Hugo: 5527 170th Street N.

Questions? Call 651-275-7475 or visit WashCoRecycles.com/YardWaste

It's National Public Works Week!

Every day Lake Elmo Public Works staff keep our water and sewer systems operational and perform maintenance on our roads and parks. Thank you for your great service to our community!





FOR IMMEDIATE RELEASE:
April 20, 2023

Contact: Alex Carlson
Public Affairs Manager
(612) 750-9960
acarlson@mmcd.org

Mosquito Control activity has begun in your community

Metropolitan Mosquito Control District trucks, helicopters, and staff will be out in neighborhoods and parks this spring and summer working to reduce mosquito-borne disease and annoyance.

SAINT PAUL - After months of heavy snow and below average temperatures, a brief warm period in mid-April this year brought mosquito larvae out. Field staff from the Metropolitan Mosquito Control District monitor wetlands in the early Spring in search of the first larva of the year. In each of the past three years, the first larva was found in mid-March, but in 2023 it wasn't until April 10th that larva was collected - during a week of unseasonably warm air temperatures. Since then mosquito larvae have been found in every county in the metro and the mosquito control season is officially underway.

The Metropolitan Mosquito Control District (MMCD) will be conducting surveillance and treatment activities in your community to reduce the risk of disease and annoyance in an environmentally-sensitive manner. Each year field staff at MMCD monitors and treats wetlands that breed mosquitoes with a fleet of trucks and helicopters. Many of our seasonal staff begin working in April and residents of the seven county metro area may notice the green or white trucks with the MMCD logo or staff on bikes or on foot wearing brightly colored "Mosquito Control" shirts.

At times MMCD employees may need to cross private property for access to check and treat areas for mosquito larvae. MMCD management asks the community to please stay several feet away from field staff and ensure children and pets are kept at a distance. If you have questions about mosquito control activities or concerns about an employee, please call the MMCD front desk at (651) 645-9149 or visit MMCD.org.

- Helicopter larval treatments - applying control materials to a wetland via helicopter.
- Catch basin treatments - applying control materials to neighborhood catch basins.
- Setting or collecting traps - surveillance helps MMCD determine where and what types of mosquitoes are active.

The control materials and methods used by MMCD are regularly tested for safety and only applied when surveillance indicates they would be effective. The active ingredients are specifically designed to target mosquito larvae or adults with minimal impacts on non-target insects. The control materials are not harmful to people, pets, or wildlife. For a complete list of control materials used, please visit MMCD.org.

Scheduled treatments including planned helicopter activity are posted on the MMCD website and on our Twitter page [@metromosquito](https://twitter.com/metromosquito). The Metropolitan Mosquito Control District appreciates your support. For information about our programs or for tips on how to reduce mosquitoes near your home, please visit MMCD.org.

Spring is here and we are in high gear with park reservations. To access all reservations, please visit the website via the link below and use the drop down menu on the top right side to move between park calendars. The city's park use policy can also be found on the reservation page.

[Park Calendars](#)



Compost Bin and Rain Barrel Sale



Washington County is excited to partner with the Recycling Association of Minnesota to sell discounted compost bins and rain barrels to Washington County residents. Home Composter compost bins are \$56 and Rain Catcher rain barrels are \$70. Pre-ordered items must be picked-up at the Environmental Center within 90 days of purchase.

[Order online](#)

Disposal Directory

A screenshot of the Disposal Directory website. The header includes the title "Disposal Directory", a language dropdown set to "English", and a share icon. Below the header are two buttons: "Directory" with a magnifying glass icon and "Need help?" with a question mark icon. A search bar contains the text "Type the name of a waste item and we'll tell you how to recycle or dispose of it." with a "Search" button. Underneath, a section titled "Popular Searches" features four circular icons with labels: "Mattresses & box springs" (mattress icon), "Furniture" (wooden chairs icon), "Carpet & padding" (carpet rolls icon), and "Small household electronics" (blender icon).

Reduce-Reuse-Recycle!

It is that time of year again when we start thinking about spring cleaning. Are you sure about what is trash and what can be recycled, and where to take it? Washington County has a new interactive disposal directory located here: [Disposal Directory](#). Try it out! It is a great tool for identifying what and where you can donate, recycle, or dispose of unwanted items.



Report Streetlight Outage

Xcel Energy maintains streetlights on public streets in Lake Elmo. If you notice a streetlight that is burned out or malfunctioning, please use the link below to report the issue. It's helpful to note the location with nearest cross streets and the pole number if you are on foot and able to make note of it.

[Click Here to Report Streetlight Outage](#)

MPCA Utilizing New Technology to Clean Water in Lake Elmo

Minnesota Pollution Control Agency has placed equipment at Tablyn Park that utilizes a new technology to remove contamination from groundwater. Click below to view a KSTP news story featuring an interview with Councilmember Jeff Holtz.

[KSTP Story](#)



The Sally Manzara Interpretive Nature Center is open every day
Visit <https://sminc-lake-elmo.org/> for details.



The Sally Manzara Interpretive Nature Center in Lake Elmo's Sunfish Lake Park is operated by a non-profit organization for the benefit of the entire community. We offer programs and events for people of all ages and have "adopted" the Park in the City's program. This work is all funded by donations. Thank you for your support!

Family Nature Day is Around the Corner! Saturday, June 3, mark your calendars! The annual Family Nature Day at Sunfish Lake Park will feature more than twenty educational and entertaining booths with something for everyone in the family, from park geology, to gardening, to beekeeping, to a messy play area. Prizes are available for our young visitors, and our friends from Tamarack Nature Center will be stopping by with live animals. This is a free event, stop by between 9 a.m. and 1 p.m. (Tamarack will have their animals here from 9:30 to 11:30)



- Summer is just around the corner, so check out our Summer Camps! Several sections are already closed and have waiting lists, but we have lots of exciting camp opportunities open. Wildflower Painting Camp starts on June 12, and has a couple slots left. Don't wait! <https://sminc-lake-elmo.org/summer-camp-registration/>
- Little Explorers Camps Pre-K Educator Annie Berres begins by gathering campers in an outdoor welcome circle focused on that day's theme, followed by open-ended play materials to allow children to explore their own interests in nature at the Sally Manzara Interpretive Nature Center. Themes include things like nature art and bees. Little Explorers kicks off June 5, with "All About Birds." On July 17 the we will be learning all about raptors—as will the Wonder Wednesday campers later that week, with a visit from Raptor Center Educators—and on July 3, which no doubt will be a hot day, campers will need to bring their bathing suits for water play.
Ages: 0-5 (one adult is required to attend with their camper)
Time: Mondays from 9:30 am - 11:30 am
Cost: \$20/family

Lake Elmo's Sunfish Lake Park Annual

Family Nature Day

Saturday June 3rd 2023

9 AM to 1 PM - Rain or Shine

at Sally Manzara Interpretive Nature Center

<https://sminc-lake-elmo.org/family-nature-day/>



Help us celebrate Sunfish Lake Park with Nature Fun and Educational Activities that are **FREE** for **ALL** ages.

Visit our staffed interpretive stations around the building on topics like honeybees, water quality, and mammals. We will also have live animals, provided by Carpenter Nature Center, and scavenger hunts and prizes for kids.

Free Coffee and Lemonade



WILDFLOWER PAINTING CAMP

June 13, 15, 20, & 22

Tuesdays & Thursdays, 9:00am-Noon

7-10 year-olds will work with artist educator Brianna Seipel to learn to identify native plants and wildflowers through short hikes in the prairie. Campers will also learn basic principles of the color wheel and complementary colors while creating a piece of art to take home.

Please plan to wear clothes that can get messy. Aprons provided. \$25 supply fee applies.

The Sally Manzara Interpretive Nature Center is located next to Sunfish Lake Park in Lake Elmo, Minnesota. The park offers 284 acres of natural area and over 8 miles of trails through forest, wetlands, and prairie.



REGISTER TODAY: sminc-lake-elmo.org/summer-camp-registration/

Sally Manzara Interpretive Nature Center is operated by Friends of Lake Elmo's Sunfish Lake Park, a 501(c)(3) nonprofit.

651-408-2838 | e-mail: info@sminc-lake-elmo.org | sminc-lake-elmo.org

The Brookfield building at 3880 Laverne Avenue is closed and under construction. All City Services are available at City Hall, 3800 Laverne Avenue

Please drive slowly and watch for construction activity



Running a company of any size can be a challenge. For a small business owner, it can be a lonely one too. Wouldn't it be helpful to have a group of peers where you have a forum for exchange of information, ideas, insights, and perspectives?

That's what our WHAT'S NEXT CEO Roundtable is all about - a place where you can work through your specific business issues with fellow small business owners. This is not a networking event. It is a peer-to-peer group that provides a secure environment for open, confidential discussions about concerns, problems, and opportunities a member may be facing.

Our What's Next CEO Roundtable is a professional business meeting consisting of small business Presidents, Owners, and CEOs from Washington County. The group will consist of 10 to 12 members from non-competing companies.

The purpose of the group is to provide a gathering for the exchange of information, ideas, insights, and perspectives. All meetings are completely confidential which provides a secure environment for open discussions about concerns, problems, and opportunities a member may be facing. On occasion, guest speakers will present ideas and solutions to roundtable members.

The value of joining and attending our monthly CEO Roundtable is to learn from peer-to-peer experiences through a facilitated roundtable conversation. You benefit by learning from each other's achievements and mistakes.

For more information click here: [What's Next CEO](#)

Lake Elmo Library

3537 Lake Elmo Avenue N
Lake Elmo MN 55042
651-275-8515
WashCoLib.org

Hours:

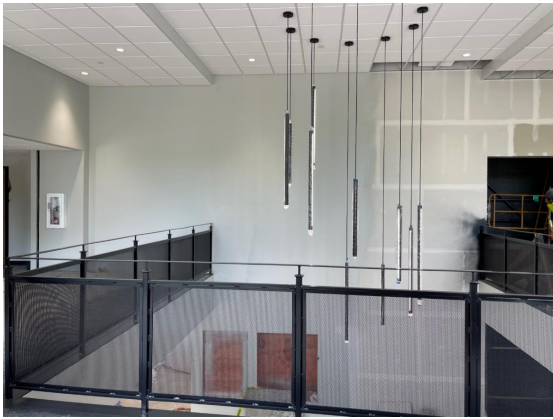
Monday: 10 a.m. - 4 p.m.
Tues., Wed., Thurs.: 12-8 p.m.
Friday: 10 a.m. - 4 p.m.
Saturday: 10 a.m. - 2 p.m.



Public Facilities Project Update

At the City Center project the "Brookfield"

letters were removed in preparation of exterior paint next week. On the interior this week crews painted the upper level mezzanine railing and began installing bathroom fixtures. Chief Kalis and Assistant Chief Svoboda checked out the fire department workspaces.



Interior framing started this week at the Public Works addition. This area will house office and work room spaces along with storage space.

Additional information is available on the City's [City Center](#)



- 1 New City Hall Entrance
- 2 New Fire Station Expansion
- 3 Council Chambers/Community room addition
- 4 Parking
- 5 Fire Department Parking
- 6 City Hall/Sheriff
- 7 Laverne Avenue

LEO A DALY

CITY OF LAKE ELMO COMBINED CITY HALL & PUBLIC SAFETY FACILITY

The new Lake Elmo City Hall / Public Safety Facility combines City Hall staff and functions, the entire Fire Department, and a satellite office for the Washington County Sheriff's department. This co-location involves renovating and expanding the City-owned Brookfield Office building to concentrate civic resources into a single structure at the historic core of the city. In addition, the Public Works facility will also be expanded to accommodate City growth and expanded service needs.



TOTAL ANTICIPATED PROJECT COST: \$14,600,000
DESIGN COMPLETION: Late summer 2021
CONSTRUCTION COMPLETION: Fall of 2022



City of Lake Elmo | 3800 Laverne Avenue North, Lake Elmo, MN 55042

[Unsubscribe](mailto:unsubscribe@lakeelmo.org) jjohnson@lakeelmo.org

[Update Profile](#) | [Constant Contact Data Notice](#)

Sent by jjohnson@lakeelmo.org powered by



Try email marketing for free today!