

**City of Lino Lakes  
Environmental Board Meeting**

**Wednesday, March 28, 2018  
6:30 PM  
Council Chambers**

**AGENDA**

1. Call to Order
2. Approval of Agenda
3. Approval of Minutes
4. Open Mike
5. Action Items -- There are no Action Items
6. Discussion Items
  - A. Recycling Updates
  - B. Emerald Ash Borer Update
  - C. Earth Day (celebrated 4/21) Continue Discussion
7. Activities to work on: Recycle Coordinator / Recycle Intern / Environmental Board Members

**CITY OF LINO LAKES  
ENVIRONMENTAL BOARD MEETING**

<b>DATE</b>	<b>: February 28, 2018</b>
<b>TIME STARTED</b>	<b>: 6:33 P.M.</b>
<b>TIME ENDED</b>	<b>: 8:24 P.M.</b>
<b>MEMBERS PRESENT</b>	<b>: Steve Heiskary, Paula Andrzejewski, Liz Kaufenberg, Nancie Klebba, Shawn Holmes, John Sullivan</b>
<b>MEMBERS ABSENT</b>	<b>: Alex Schwartz</b>
<b>STAFF PRESENT</b>	<b>: Marty Asleson, Sayard Schultz</b>

**I. CALL TO ORDER AND ROLL CALL:**

Mr. Heiskary called the Lino Lakes Environmental Board meeting to order at 6:33 p.m. on February 28, 2018.

**II. APPROVAL OF AGENDA**

Mr. Sullivan made a MOTION to approve the Agenda. Ms. Kaufenberg seconded motion. Motion carried 6 - 0.

**III. APPROVAL OF MINUTES:**

January 3, 2018

Ms. Kaufenberg made a MOTION to approve the January 3, 2018 Meeting Minutes. Ms. Holmes seconded motion. Motion carried 6 - 0.

**V. OPEN MIKE**

Mr. Heiskary declared Open Mike at 6:35 p.m.  
Open Mike declared closed at 6:36 p.m.

**VI. ACTION ITEMS**

**A. Main Street Shoppes 2<sup>nd</sup> Addition**

The site is a 17.32 acre parcel/ 1.5 acres of disturbed area; on the NE area of Main Street and Otter Lake Road. Immediately east of McDonalds in Lino Lakes.

Soils- Soil on the site are primarily sandy clay soils. Soil borings indicate a seasonal high water table within two feet of the ground surface.

Surface Water – There must be a report submitted to the RCWD and the City annually, no later than January 31<sup>st</sup> of each year, listing inspection dates, facilities inspected, facility conditions and actions taken and dates of action taken.

Flood Plain – RCWD modeling determined that the project is not within the flood management zone.

Wetlands - There are wetlands within the parcel; however, the site does not impact them.

Stormwater Pollution Prevention Plan - A National Pollutant Discharge Elimination System (NPDES) permit is required for the project. All requirements of the NPDES permit must be documented and approved by the City. The submitted SWPPP looks good.

AUAR Consideration – The site is within the I-35E Corridor AUAR and is subject to the AUAR mitigation plan. Overall, the proposed subdivision complies with the AUAR mitigation plan.

Drinking Water Protection - This site is in a Drinking Water Protection Area. The site is rated for a moderate amount of vulnerability and a low sensitivity rating for area soils. The higher the permeability of the soils in a DWSMA, the higher the vulnerability.

Tree Preservation – No trees on site

Lighting - All fixtures must be cut-off lens type, i.e. downward focused, low intensity

Landscape Plan – Trees should be changed to a species that will tolerate clay type soils. All commercial turf and shrub planting areas must be irrigated. A smart irrigation system with soil moisture sensors should be used.

Sod areas, planted with a fescue type of low maintenance sod and may not need any irrigation after established.

Ms. Kaufenberg recommend adding native planting to the suggestion on the landscape plan.

Recycling – A description of state law requirements of business recycling must be provided.

Ms. Andrzejski made MOTION to approve with Enviromental Board comments and reccommendation. Mr. Sullivan seconded motion. Passed 6-0

**B. Love to Grow on Childcare Center**

The proposed project includes the construction of a single story, slab-on-grade childcare center that has a buildong footprint of about 14,650 feet. The building will have 35 space parking lot constructed NE of the building.

The project requires an NPDES permit

The project is CUP because it is a childcare facility. The project has no adjacent residential areas so there is no screening requirment.

Much has changed since 2003 in RCWD and city rules. The site needs to be re-evaluated from a WCA and Stormwater rule standpoint

The western portion of the site is within 1000 feet of the OHW of Baldwin Lake. This makes it fall in the Shoreland Overlay District. For Commercial development in the Shoreland Overlay District, the impervious maximum allowed is 60%. This project meets that requirement.

Site is an open field. The water drains south and east to regional Stormwater ponds, west to Hodgson Road ditch and north to the Birch Street ditch. The road ditch drains to an existing storm sewer system located near the site.

Mr. Asleson would like to see dropped curbing on the site to aid in amphibians movement.

Surface Water – if the RCWD would require NURP instead of infiltration ponds, than proposed vegetation must be changed to a standing water planting plan

The infiltration basin must not be a part of the play area.

Fence and plantings must be kept off of the wetland easement SE of the building.

Plan sheet need to better define water flow direction.

Wetlands - Since this is not part of a wetland management corridor, a 10-foot buffer only is needed around the site wetlands.

The developer is proposing to manage water quality by channeling water to the infiltration ponds. Stormwater guided to the two existing wetland/ponds after

treatment.

Rice Creek Watershed must review the surface water /Stormwater issues for compliance to impervious surface rules and discharge rate control.

RCWD- needs to review and

Developer needs to supply a plan for stormwater and the ponds needs to have an annual inspection.

Need to keep playground out of Buffer

Mr. Asleson would like to add recommendation- Infiltrometer test on the infiltration ponds

Drinking Water Protection – This is in a drinking water service management area. Special precautions should be made during construction and as part of the SWPPP to take extra caution with equipment on the site. A containment under any fueling stations is required. A concrete washout area must be defined and designed so that concrete waste does not touch or spilled / dumped on existing soils

Tree Preservation - no trees on site.

Lighting- the photometric plan for lighting the site meets the requirements of the City. All fixtures should be downward focused, low intensity and cut-off type lens

Landscape Plan - Landscaping on the road ROW corners must be pulled back 30 feet in both directions for road site-line reasons.

Tree and plants species matrix is appropriate. The native planting must be accompanied with a 5 year maintenance plan. The plan and the company must be approved by the city.

All sod areas must be irrigated and planted with a low maintenance fescue sod be used. It is highly recommended that a system with ground moisture sensors be installed.

Recycling- A description of state law requirements of business recycling must be provided.

Mr. Sullivan made MOTION to approve this plan contingent on RCWD recommendation for proper surface water management on this site, along with the Environmental Board comments and recommendations including a infiltrometer test. Ms. Adrzejewski seconded the motion. Passed 6-0

**C. Distinctive Elements Tile and Design**

The Bland's own a tile installation business and will use this site as a warehouse for installation supplies and an office area for potential client meetings.

The zoning will not change to light industrial but stay general business.

This site is in the Apollo Drive Business District and the district was reviewed by the Environmental Board around 1999. At that time it was determined that the excavated storm/infiltration ponds were adequate to service the entire Apollo Drive business area.

Soils – are sandy with high infiltration rates. The water table is deep enough so there are no separation issues.

Land Cover – The ground surface is non-native mowed grasses. The lot has some undetermined species of trees on the west side of the property.

Significant Resources - no significant resources on this site.

Surface Water – the developer is proposing to build an infiltration basin. The basin will be reviewed by RCWD and our city engineers to ensure the water quality and water quantity standards are being met.

Floodplain and Wetlands - there are neither on this site

Drinking Water Protection – this is not in a Drinking Water Service Management Area.

Tree Preservation – There are hardwood trees on the west and an evergreen screen trees on the east.

SWPPP – A NPDES permit is not needed for this site. An erosion control plan is needed. A rock entrance is needed. Silt fence is shown on the plan for perimeter control. The developer must protect all storm drain inlets within 200 feet of the property on Apollo Drive.

Lighting – the developer must submit a photometric plan and must submit lighting fixtures. The fixtures must be a low intensity, downward focused, cut-off type lens.

Landscape Plan – the tree and shrub plantings are appropriate. Seed mix must be given to the city. It is preferred to have a native seed mix in the infiltration pond. Since this is in front of the building, a native, alternative lawn such as a variety of fescue.

All sodded areas must be irrigated. Low maintenance fescue grass would be preferred.

Recycling - A description of how the business will be participating in the required state law for business recycling must be provided.

Mr. Sullivan questioned the future expansion of the business that is on the plan

Mr. Bland had the architect add the proposed future areas so he would not become land locked if he would expand his business.

Ms. Holmes recommend that Mr. Asleson do a site visit to check the trees for an inventory.

Ms. Kaufenberg suggested that the final landscape plan includes low maintenance and/or native plants if possible

Ms. Andrzejewski made MOTION to approve the site plan with the Environmental Board recommendations and comments Ms. Kaufenberg seconded motion Passed 6-0

#### **D. Eastern Heights**

The project proposal is located near the intersection of County Road J and Hodgson Road and approximately 17 acres and is zoned General Business.

Hampton Properties is proposing to develop approximately the land into mixed-use development consisting of 50 townhomes, 80 apartment units and 32 memory care and high acuity assisted living units. The units will be part of a homeowners association.

Site Evaluation – The site appears to have one wetland in the NW corner of the proposal.

The Concept Plan has two ponds drawn on the site concept plan. One pond is adjacent to a wetland on the NW side of the project and the other is on the SW side of the project proposal. It is unknown at this time if a wetland delineation was done.

Soils – the developer shows sandy soils on the site. Unknown if there are soil boring done.

Land Cover - A detailed tree inventory, and tree preservation plan would need to be done if this project goes forward

Significant Resources – no significant resources on this site. No NHIS data for this site.

Surface Water - -there are 4 catchment areas on this parcel. Future surface water allocations should try to stay in the same catchment areas.

Flood Plain – there is no flood plain on the site

Wetlands – this is a wetland on the concept plan. If this wetland has not been delineated, that must be done.

Stormwater Pollution Prevention Plan – the project will need to have an NPDES permit and a full SWPPP submitted.

Tree Preservation – A tree preservation will need to be submitted.

Landscape Plan – A detailed landscape plan will need to be submitted. Boulevard trees are required and escrow money obtained for these trees.

Mr. Asleson would like to see in this is an assisted living and memory care facility area, the use of trails and flower garden plantings should be planned for this development. A small handicap accessible community garden area would also be desirable in this area for programming open space landscaping.

Alternative lawns are preferred to cultured bluegrass sod. Irrigation in the sod areas with a smart system with soil moisture sensors.

Ms. Andrzejewski wants to make sure that the water drainage is addressed.

Ms. Holmes is wondering if a 3 story apartment building would be a visual impact

Ms. Kaufenberg made a MOTION to move concept plan forward to Planning and Zoning with the Environmental Board comments and recommendations. Ms. Klebba seconded motion. Approved

## **VII DISCUSSION ITEMS**

### **A. Recycling Updates**

Ms. Schultz is still waiting on the SCORE points to be approved from Anoka County

Organic recycling is going well, there will be increased in the bins sizes to handle the amount of organic being collected at the parks

Environmental Goals will be moved to the April City Council meeting

Simple Recycling was approved by City Council on February 27th

Looking at doing On-Site Paper Shredding every other month instead of every month



which it currently is on Recycling Saturday.

**B. Earth Day**

Will be held at Wargo Nature Center, Saturday April 21, 12:30-3:00pm the theme is Natural Resources and outdoor recreation. The information that the booth will have is Heron information, know your parks, biking paths and trails(maps), visual display of plants (Paula) and information and pictures of bad and good plants.

Actives for kids will be making seed balls. Supplies needed will be water, paper towels, small compost container,clay and seeds.

Looking for a few extra people to monitor at organic compost containers at Wargo

**VIII. ADJOURNMENT**

Ms. Andrzejewski made a MOTION to adjourn the meeting at 8:24 p.m. Ms. Kaufenberg seconded motion. Motion carried 6 - 0.

Respectfully submitted,  
Nancie Klebba  
Mary Fogarty  
Office Tech 1

## **ENVIRONMENTAL BOARD AGENDA ITEM 6C**

**STAFF ORIGINATOR:** Sayard Schultz, Recycling Intern

**MEETING DATE:** March 28, 2018

**TOPIC:** Earth Day Event (April 21<sup>st</sup>, 2018)

---

### **BACKGROUND**

Each year, the Environmental Board Members, Lino Lakes Staff, and Anoka County Staff collaborated with each other to host an Earth Day celebration at the Wargo Nature Center. This event is always scheduled on or near April 22<sup>nd</sup>. In addition, each year the group picks a new environmental theme to showcase at the event.

Prior to the start time of the event (12:30pm), the different collaborating groups host their own separate volunteer get-to-together to promote environmental activist in their respective communities. Lino Lakes Environmental Board Members and Staff host a city parks and open space cleanup. During this time, residents gather into organized groups and assist in cleaning and beautifying the City of Lino Lakes' green areas.

2018 Lino Lakes Volunteerism: 8:30am to 11:30am, starts at Lino Lakes City Hall  
2018 Earth Day Celebration: 12:30pm to 3pm @ Wargo Nature Center – 7701 Main St.  
Lino Lakes MN 55038

### **ENVIRONMENTAL DIRECTION**

- NOTE: 2018's Earth Day theme is natural resources focusing on outdoor activities and engagement
- Update PowerPoint Presentation- Make edits
- Booth Set-up: Discuss what to display and showcase at the booth
  - 1) Waste management Section:
    - Selling Lino Lakes Rain Bins
    - Example of compost bins from Anoka County
    - City Compost options | bags & pails
    - Discuss having Simple Recycling and Walters at event in order to promote their services.
    - Promotional Items: Shirts and tote bags (get sizes)

- Student Design Contest Entries  
<http://www.earthdayshirts.com/resources-sdc>
  - Create a list of items staff need to bring to event
  - Show case City events; such as
    - Spring Recycling Day (May)
    - Fix-it clinic: perhaps display ripped jeans and other props to get patrons engaged. (August)
- 2) Rare Plant Sections:
- a. Community Gardens
  - b. Invasive Species
- 3) Natural Resource Section:
- a. Know your parks
  - b. Know your city's green spaces and waterways
  - c. Outdoor activities: annual nest counts & tree maintenance

## **ATTACHMENTS**

1. Original PowerPoint Presentation
2. Updated PowerPoint Presentation
3. 4-26-2017 Environmental Board Meeting Minutes (page 3)
4. Examples of tote bags
5. Example of T-shirt design

# **Environmental Activities in Lino Lakes**

Prepared by:

Lino Lakes  
Environmental  
Board



# Overview

- Environmental Board Charge
- Storm Water and Surface Water Management
- Summarize City and Board-related environmental activities
- Acknowledge citizen participation and related activities
- Identify threats to environment in Lino Lakes and solutions

# Environmental Board (EB) Charge

## Quick Facts about the Lino Lakes Environmental Board\*

- Formed in 1996 to do the following:
  - Advise City Council on use and management of natural resources
  - Development plan review
  - Natural resource inventory
  - Identifying local rare or endangered wildlife or plant species
  - Coordinating community educational programs
  - Recommending locations for greenway corridors
  - Coordinating Earth Day Celebrations each year (April)

*Volunteers are always welcome to help with the events.*

\*The Environmental Board meets the last Wednesday of each month at 6:30 p.m. in the city council chambers. Contact City Hall if you are interested in learning more about the EB!

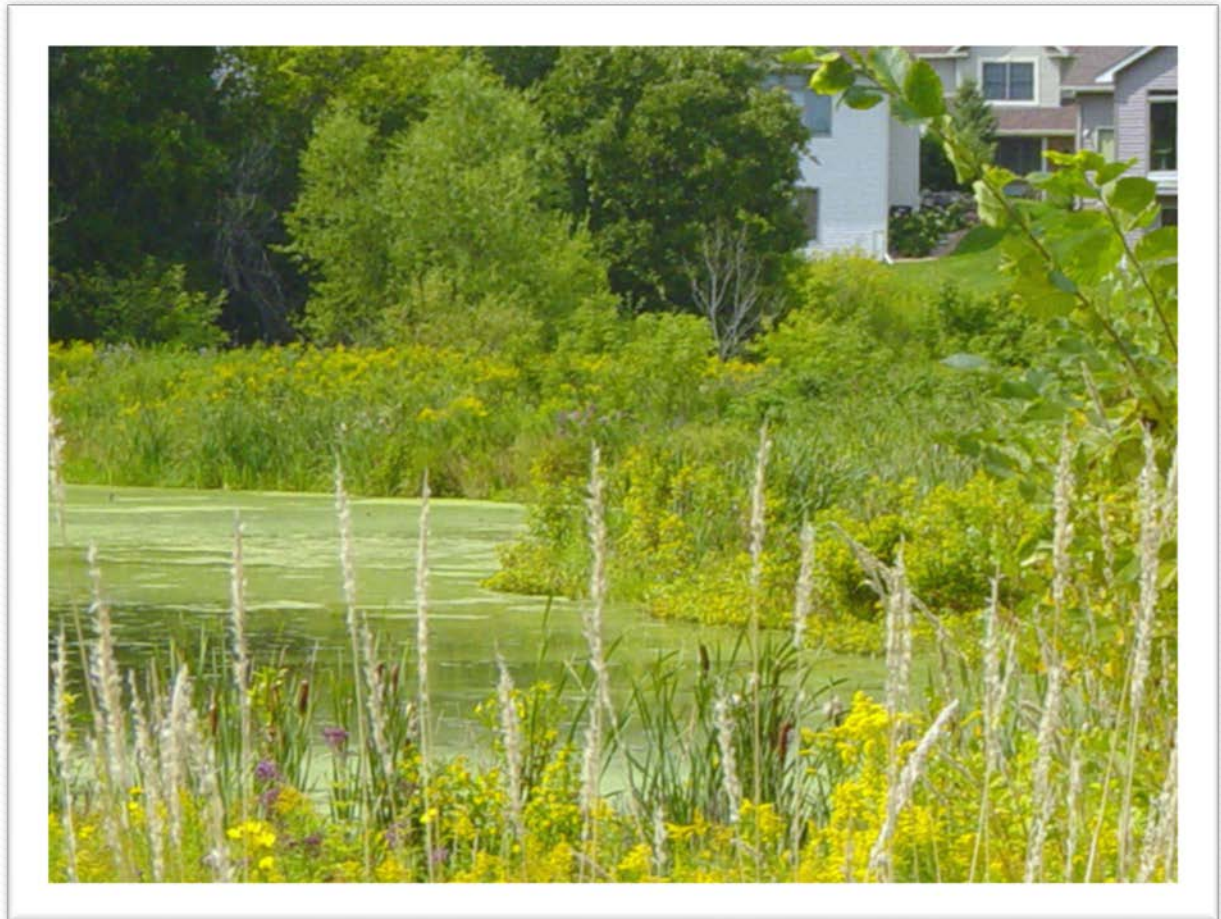
# Wetlands and Prairies

- Active Management
  - Controlled burns
  - Reed Canary Grass Control



# Wetlands

- Encourage filtration
- Provide habitat





# Wollan's Park Wetland improvements: Valuable wetland bank, abundant natural vegetation & numerous rare plants



# Storm Water & Surface Water Management

## Essential to the protection of surface and groundwater

- Storm Water and Surface Water Management
- Pollution prevention and wetland banking
- Review development proposals
- Eliminate illicit discharges
- Wetland restoration
- Supported by various state, watershed, and local requirements



# Storm Water Swale (City Hall)

This is the front of City Hall – the native grasses and plants help with storm water runoff



# Rain Gardens

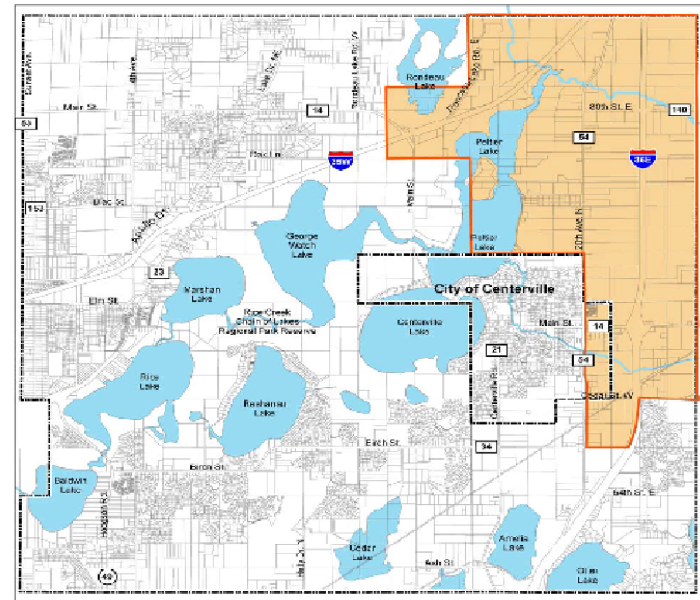
- Filter water
- Aesthetic enhancement



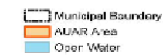
# Development Proposals

- Review to ensure proper environmental protections in place
- Considerations:
  - Runoff
  - Wetland Preservation
  - Buffers
  - Follow AUAR Requirements for specific protections

Figure 2-5. I-35E Corridor AUAR Area

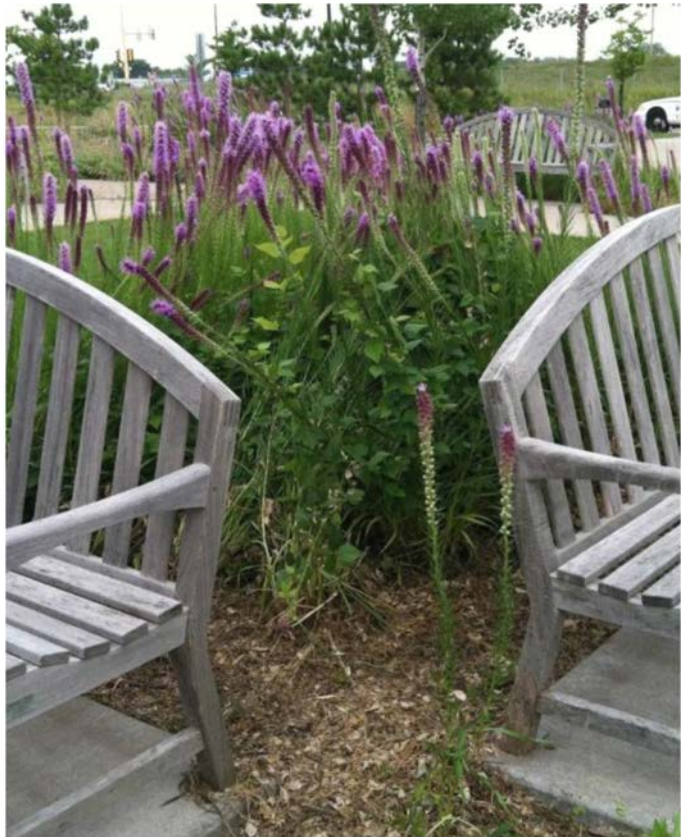


I-35E Corridor AUAR Area  
City of Lincolns Lakes 2030 Comprehensive Plan



# Legacy Woods

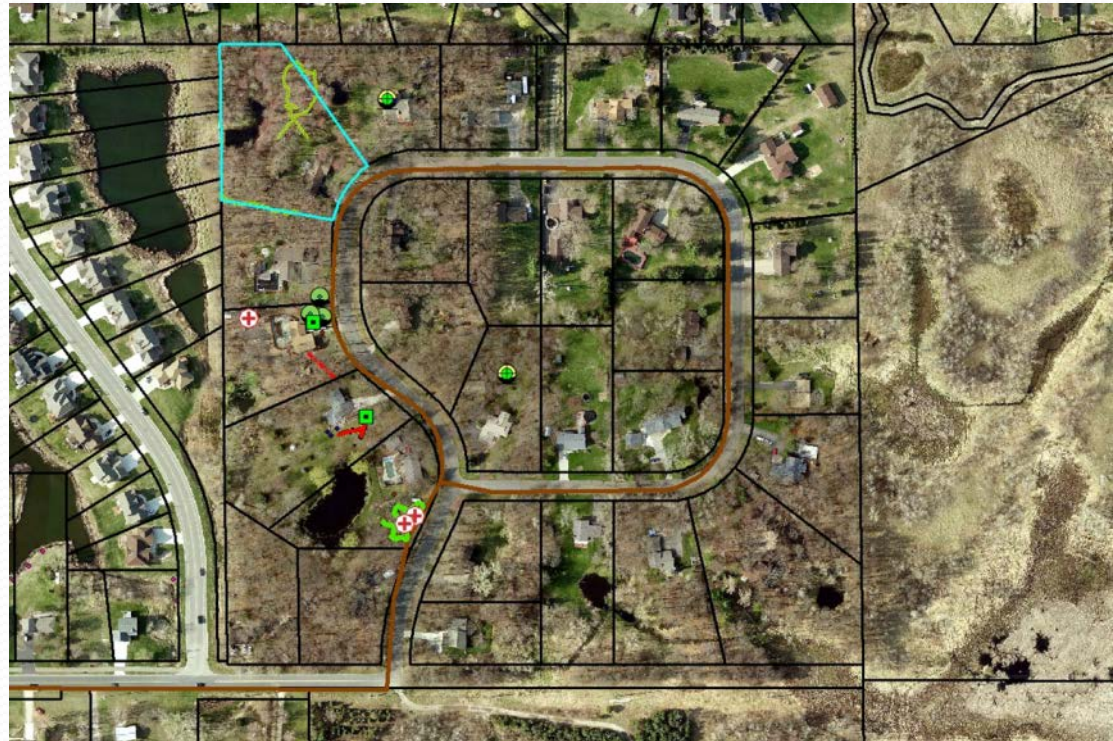
## Community Space and Flower Gardens



# Plant Diseases

## Impact on Lino Lakes Environment

- Oak Wilt has been a long-term issue affecting trees throughout the area;
- Appears to be down in recent years;
- Projects like those at Red Maple Lane have helped



# Invasive Species

## Pests

- **Emerald Ash Borer**
  - Previously identified in Shoreview and Ham Lake.
  - Found in LL in 2017 on trees in Target parking lot.
  - City has a plan to address EAB– in collaboration with Anoka County and neighboring cities

Plants – land: Buckthorn

Plants – water: Curly-leaf & Eurasian water milfoil



Buckthorn cutting



# **Emerald Ash Borer – LL plan**

## **City has been implementing this plan**

- **Plan includes preserving/ treating of high value ash trees;**
- **Removal of weakened or diseased trees;**
- **Established area for gathering trees for proper disposal;**
- **“10,000 Trees for Lino Lakes” allows residents to order trees at reduced cost.**

## **You**

- 1. Do not move firewood from one area to another;**
- 2. Plant new trees – help city get a head of this!**

# Curly-leaf pondweed & Eurasian water milfoil: Centerville & Peltier Lakes

- **Milfoil moved among lakes by boats & trailers – keep ‘em clean!!**
- **Curly-leaf is a common invasive in 100’s of lakes statewide;**
- **As curly-leaf dies back severe blue-green algae blooms often follow (Peltier below).**
- **RCWD 2017-18 water level drawdown aims to reduce curly-leaf**



# Blue Heron Nesting Restoration



**Significant Effort for Lino Lakes: Driven by LOCAL volunteers in cooperation with City staff, & Environmental Board;**

**Efforts included:**

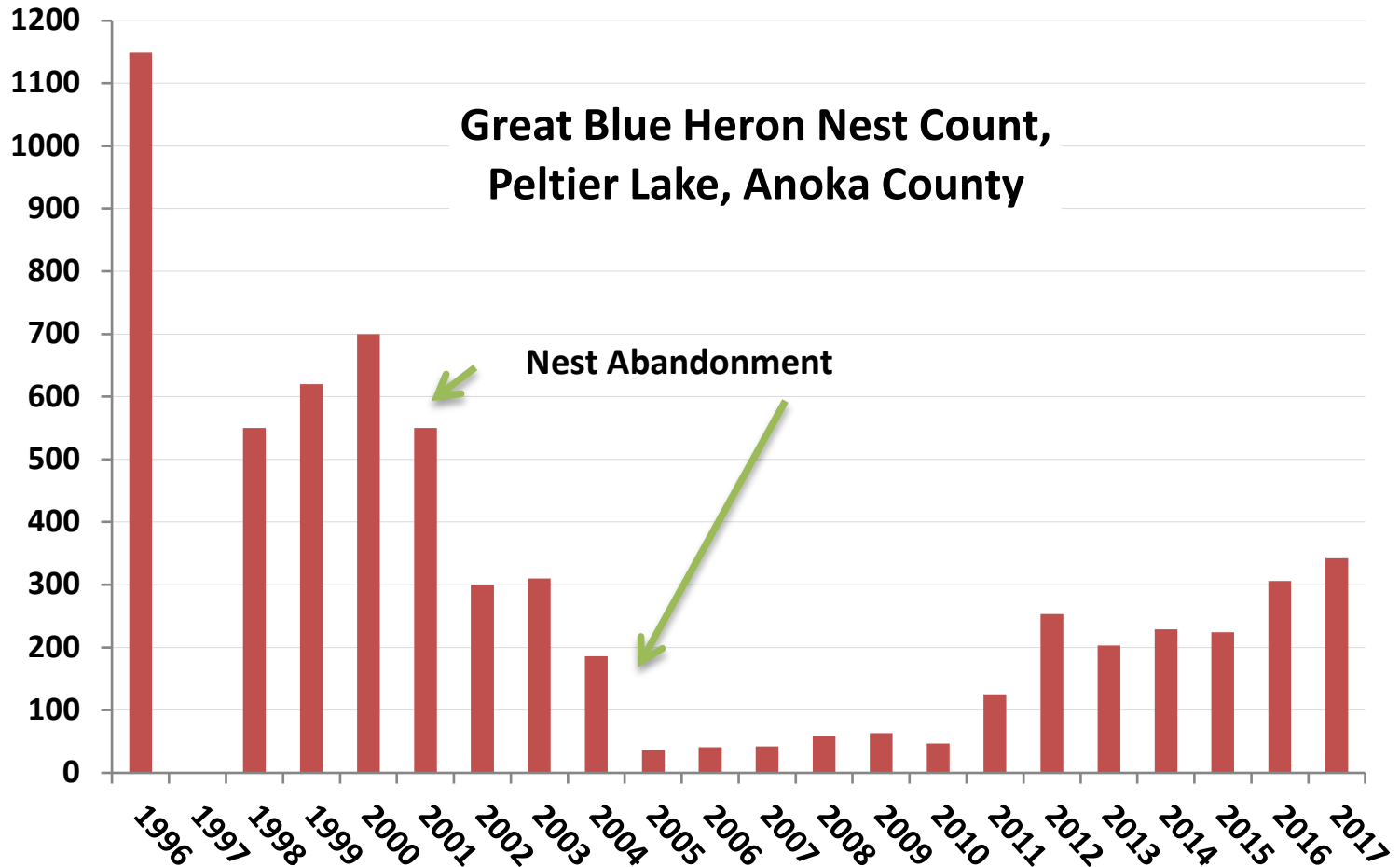
- 1) Researching the problem of nest abandonment**
- 2) No-Wake Zone established near the island;**
- 3) Flashing trees to reduce predation by raccoons**
- 4) Monitoring of population & maintenance of flashing**




# Volunteers, EB, and Anoka county staff conduct annual nest counts & tree maintenance



As of January 2018, 342 nest were counted in 106 trees. Each tree, containing a nest, received a tag during the annual maintenance event





A Great Egret with a long, sharp beak and long legs stands on a piece of weathered driftwood in a pond. The water is a deep, dark green, and the background is a soft-focus green. A speech bubble with a blue border and a light green fill is positioned to the right of the bird's head, containing the text "Thank you, Lino Lakes!".

Thank you,  
Lino Lakes!

# Wildlife Partnerships

- Audubon MN at Golden Lake and Rice Lake Elementaries
  - Osprey Pole and banding of baby osprey
  - Mark Martell
- Lino Lakes Elementary
  - Arbor Day



# Wildlife Partnerships (Cont.)

- Rice Lake Elementary
  - Bluebird Trail
    - Managed by students during school year/volunteers in summer
  - Three rain gardens planted with Rice Creek Watershed Grant
    - Managed by students and staff
  - Eagle Scouts, Boy Scouts and Girl Scouts build, weed, and enhance nature sites

# Osprey Banding at RLE

- Students help, calm the babies while US Fish and Wildlife bands and Audubon ID tags are attached to their legs.
- Data is recorded and stored to monitor birds' location and nesting success.



# Rain Gardens at RLE

Students plant and weed three rain gardens at Rice Lake Elementary



# Unique and rare plants & animals

Restored, Preserved, Protected





Sun Dew Plant

# Community Garden

- Established in 2011
- Location: 7731 Lake Drive (by American Legion)
- Anoka County SHIP Grant
  - Used to develop site
    - Installed 68 plots
    - Provided water source
- 2012
  - All 68 plots used!
- 2013 - 2017
  - Plot sign-up managed by Park Board
  - Further expansion on site



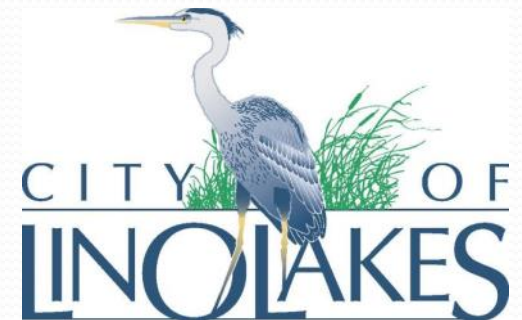
# Dedicated Gardeners Yield a Flavorful Harvest!



# Annual Solid Waste and Recycling

## Annual Recycling Event

- City-wide event each Spring / occasionally in Fall
- Amount Collected (annually 2008-2012):
  - ~1,900-2,000 tons [exceeded Anoka Count goals in all years;
- Added monthly events in 2013-2014 and tonnage increased to 2,040-2,140 tons;





# Annual Solid Waste and Recycling

- Increased recycling due to partnerships with:
  - Organics at city buildings
    - Available at summer events: Corn Roast, Blue Heron Days festival
  - Anoka County
    - Promote recycling opportunities with local businesses (Minnesota Waste Wise)
  - Parks Board to increase recycling
    - “Can Cages” are proving to be successful



# Monthly Solid Waste and Recycling

## Recycle Saturdays!

- Location: Lino Park 7850 Lake Drive
- Third Saturday of each month
- 10:00am – 2:00pm
- Go to Lino Lakes City Website for more information
  - <http://www.ci.lino-lakes.mn.us/>



# 2015 Annual Recycle Day

- 2015
  - May 2<sup>nd</sup>
  - 9am – 3pm
  - City Maintenance Shop – 1189 Main Street

FREE! Document Shredding!

- Items to recycle:
  - Household Goods
  - Scrap Metal
  - Major Appliances
  - Tires
  - Electronics
  - Car Batteries
  - Glasses/Hearing Aids
  - Fluorescent Bulbs



# City Events: Earth Day, Arbor Day, Recycle Days, Corn Roast, and Blue Heron Days



# Informational Kiosk for Citizens at City Hall

Pick up some info today to help you learn about:

- DIY rain gardens
- Recycling
- Plantings for saving water
- Events and activities



# Summary

**The City of Lino Lakes Environmental Board is committed to the protection of land and water resources in the city.**

**There are many facets to this, including:**

- **City Staff**
- **Various departments and Programs**
- **Collaboration with:**
  - **The State of Minnesota**
  - **Anoka County**
  - **Watershed Districts**
- **CITIZEN VOLUNTEERS!**

# Partners and Collaboration

- **Rice Creek Watershed District**
- **Anoka County**
- **Neighboring cities**
- **Lino Corrections Department**
- **SHEP**
- **Scouts**
- **ISD #12 Centennial Schools**
- **Forest Lake School District**

# Environmental Board Members

2017/2018

- Paula Andrzejewski
- Steve Heiskary
- Shawn Holmes
- Liz Kaufenberg
- Nancie Klebba
- Alex Schwartz
- John Sullivan

## Lino Lakes staff & contact for Environmental Board:

- Marty Asleson, Environmental Coordinator

email: [marty.asleson@ci.lino-lakes.mn.us](mailto:marty.asleson@ci.lino-lakes.mn.us)

- Mary Fogarty, secretary
- Sayard Schultz, Recycling



# **Environmental Activities in Lino Lakes**

Prepared by:  
Lino Lakes  
Environmental  
Board



# Overview

- Environmental Board Charge
- Lino Lakes' Natural Resources
- Wetlands and Prairies in your Backyard
- Lakes and Rivers
- Summarize City and Board-related environmental activities
- Acknowledge citizen participation and related activities
- Identify natural resource threats
- Waste Management


# Environmental Board (EB) Charge

## Quick Facts about the Lino Lakes Environmental Board\*

- Formed in 1996 to do the following:
  - Advise City Council on use and management of natural resources
  - Development plan review
  - Natural resource inventory
  - Identifying local rare or endangered wildlife or plant species
  - Coordinating community educational programs
  - Recommending locations for greenway corridors
  - Coordinating Earth Day Celebrations each year (April)

*Volunteers are always welcome to help with the events.*

\*The Environmental Board meets the last Wednesday of each month at 6:30 p.m. in the city council chambers. Contact City Hall if you are interested in learning more about the EB!

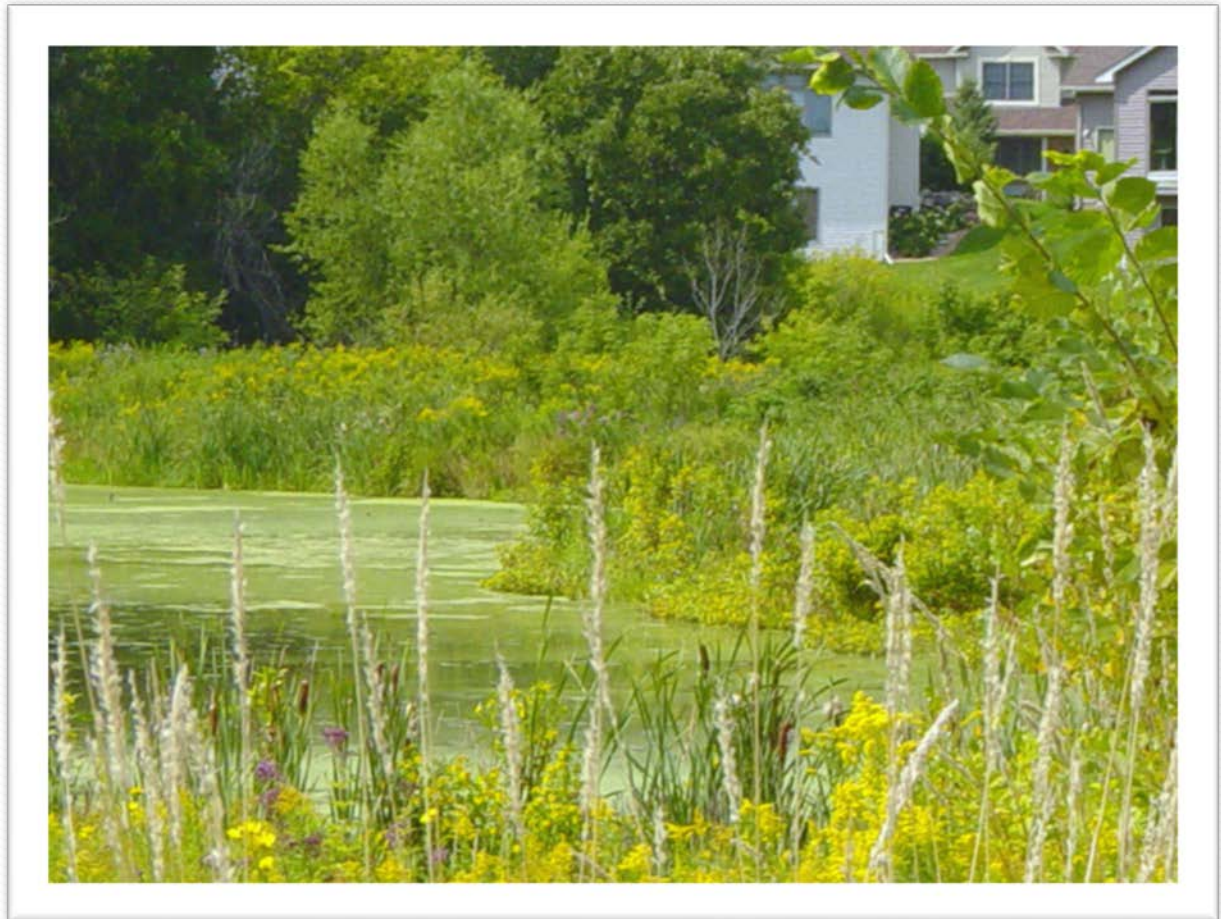
- 
- The City of Lino Lakes is fortunate to be home to an abundance of natural resources. These resources are regarded as an amenity to residents and essential to the attraction, aesthetics and quality of life offered by the community. The abundant wetlands and lakes, forested uplands, restored prairie areas, and other natural areas support a wide diversity of wildlife and plant communities.

# Wetlands and Prairies

- Lino Lakes has more than 400 wetlands

# Wetlands

- Encourage filtration
- Provide habitat





**Wetland improvements: Valuable wetland bank,  
abundant natural vegetation & numerous rare plants**

# Lakes and Rivers

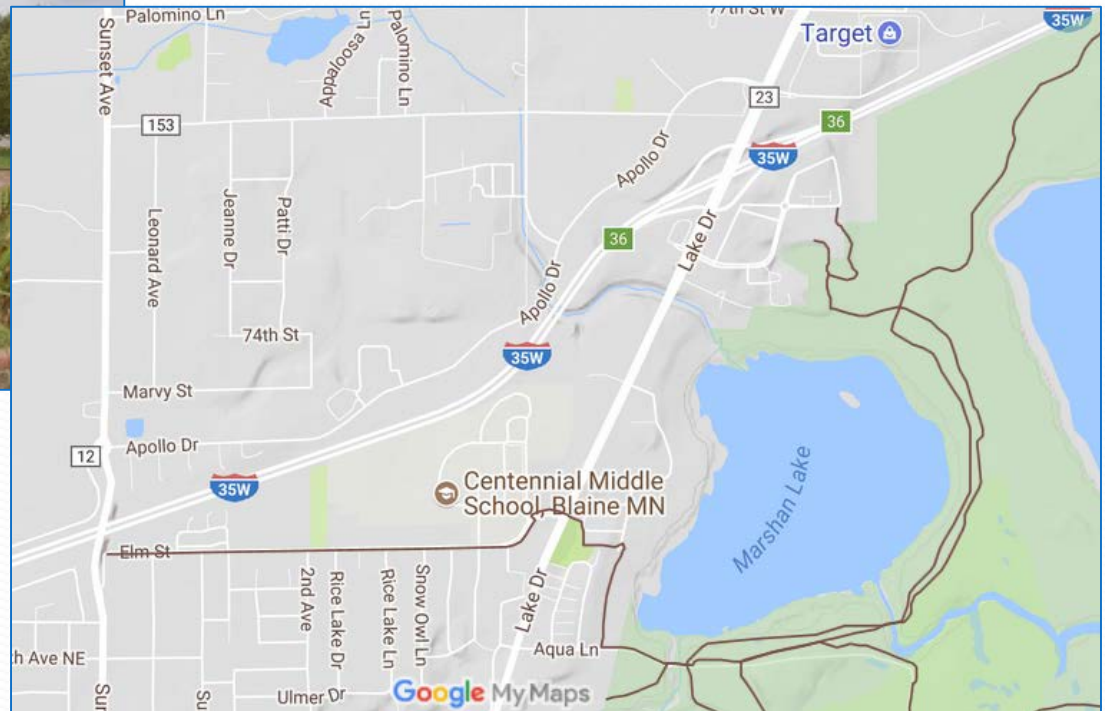
- Lino Lakes has over 15 miles of canoe trails including Rice Creek that leads to the Mississippi River. Our creeks connect different habitats. These same water also provides a corridor for wildlife to travel between fragmented patches of woodlands, grasslands, and wetlands.





# Parks

- The pristine 5,500-acre Rice Creek Chain of Lakes Regional Park Preserve

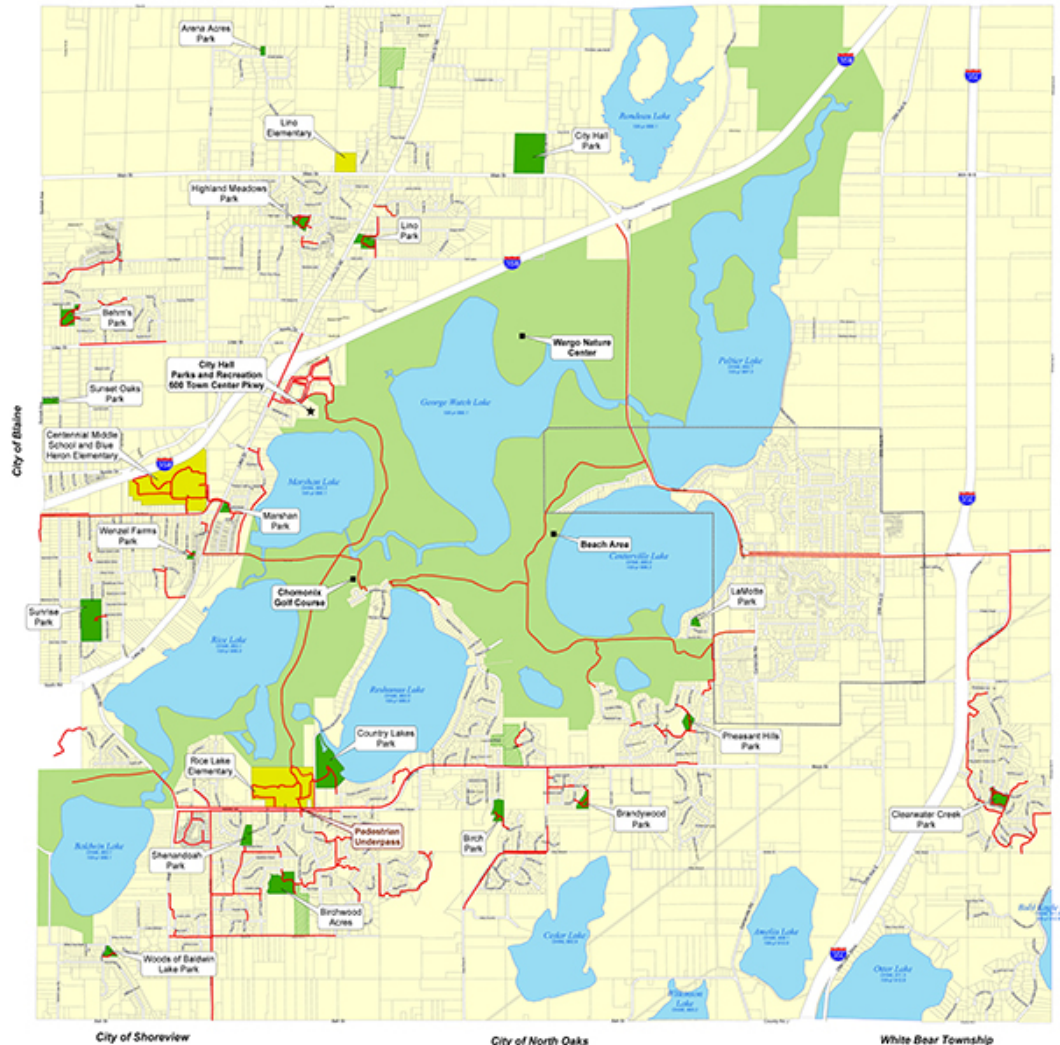


# City of Lino Lakes

## Parks and Trails Map



Columbus Township



Lino Lakes  
Parks and Recreation Department  
600 Town Center Parkway  
Lino Lakes, Minnesota 55014  
[www.ci.lino-lakes.mn.us](http://www.ci.lino-lakes.mn.us)  
Phone (651) 982-2440

Geographic System:  
North North Pole  
NAD83  
North County Parcel Data  
August 2013 Release



September 2010

Maps are for illustrative purposes only.  
Recent changes may not be included.  
Land Use and Zoning Information  
should be verified with City Staff.

Legend	
<span style="color: green;">■</span> City Park	<span style="color: red;">—</span> Existing Trail
<span style="background-color: yellow;">■</span> Public School	<span style="color: blue;">■</span> Lakes
<span style="background-color: lightgreen;">■</span> Undeveloped Park	<span style="border: 1px solid black;">■</span> Parcels
<span style="background-color: #90EE90;">■</span> Rice Creek Regional Park	

# City Parks

Arena Acres Park

Behm's Park

Birch Park

Birchwood Acres Park

Brandywood Park

City Hall Park

Clearwater Creek Park

Country Lakes Park

Highland Meadows Park

Lino Park

Marshan Park

Pheasant Hills Park

Shenandoah Park

Sunrise Park

Sunset Oaks Park

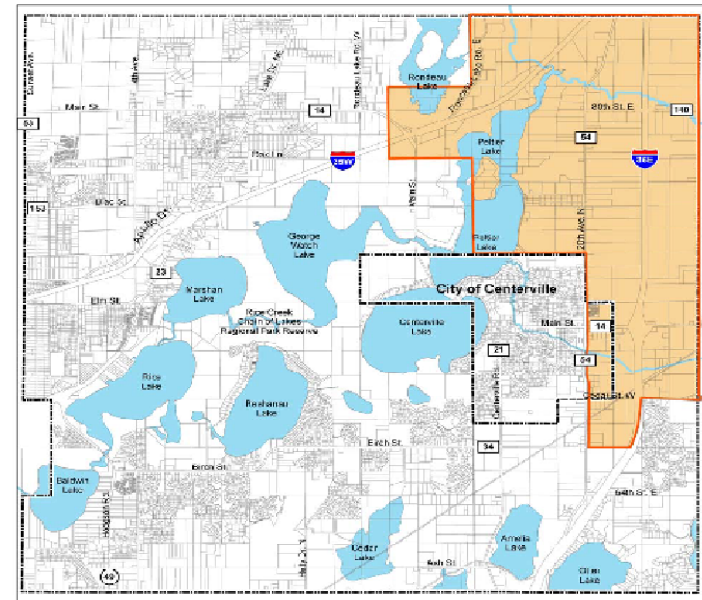
Wenzel Farms Park

Woods of Baldwin Lake

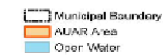
# Development Proposals

- Review to ensure proper environmental protections in place
- Considerations:
  - Runoff
  - Wetland Preservation
  - Buffers
  - Follow AUAR Requirements for specific protections

Figure 2-5. I-35E Corridor AUAR Area



I-35E Corridor AUAR Area  
City of Lincolns Lakes 2030 Comprehensive Plan



# Invasive Species

## Pests

- **Emerald Ash Borer**
  - Previously identified in Shoreview and Ham Lake.
  - Found in LL in 2017 on trees in Target parking lot.
  - City has a plan to address EAB– in collaboration with Anoka County and neighboring cities

Plants – land: Buckthorn

Plants – water: Curly-leaf & Eurasian water milfoil



**Buckthorn  
Cutting**





# **How to Stop the Spread of Invasive Species and Enjoying our Natural Resources**

# Blue Heron Nesting Restoration



**Significant Effort for Lino Lakes: Driven by LOCAL volunteers in cooperation with City staff, & Environmental Board;**

**Efforts included:**

- 1) Researching the problem of nest abandonment**
- 2) No-Wake Zone established near the island;**
- 3) Flashing trees to reduce predation by raccoons**
- 4) Monitoring of population & maintenance of flashing**

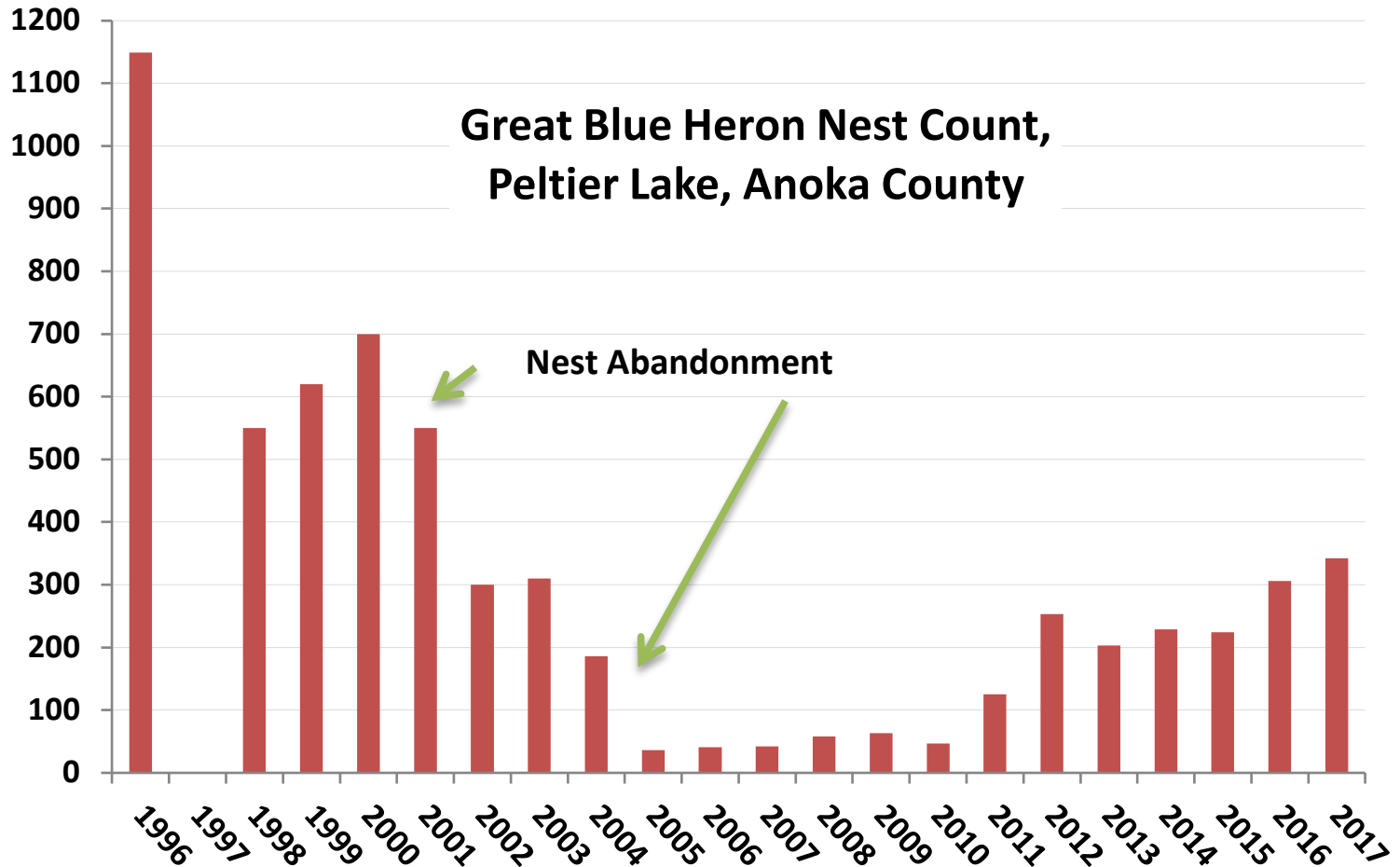


# Volunteers, EB, and Anoka county staff conduct annual nest counts & tree maintenance






As of January 2018, 342 nest were counted in 106 trees. Each tree, containing a nest, received a tag during the annual maintenance event



# Places to Bird Watch

- L
- L
- L
- L
- L
- L



A Great Egret with long, thin legs and a long, sharp beak stands on a piece of weathered driftwood in a pond. The water is a deep, dark green, and the background is a soft-focus green. A speech bubble with a blue border and a light green fill is positioned to the right of the bird's head, containing the text "Thank you, Lino Lakes!".

Thank you,  
Lino Lakes!

# Wildlife Partnerships

- Audubon MN at Golden Lake and Rice Lake Elementaries
  - Osprey Pole and banding of baby osprey
  - Mark Martell
- Lino Lakes Elementary
  - Arbor Day

# Wildlife Partnerships (Cont.)

- Rice Lake Elementary
  - Bluebird Trail
    - Managed by students during school year/volunteers in summer
  - Three rain gardens planted with Rice Creek Watershed Grant
    - Managed by students and staff
  - Eagle Scouts, Boy Scouts and Girl Scouts build, weed, and enhance nature sites

# Osprey Banding at RLE

- Students help, calm the babies while US Fish and Wildlife bands and Audubon ID tags are attached to their legs.
- Data is recorded and stored to monitor birds' location and nesting success.



# Rain Gardens at RLE

Students plant and weed three rain gardens at Rice Lake Elementary



# Unique and rare plants & animals

Restored, Preserved, Protected







Sun Dew Plant

# Community Garden

- Established in 2011
- Location: 7731 Lake Drive (by American Legion)
- Anoka County SHIP Grant
  - Used to develop site
    - Installed 68 plots
    - Provided water source
- 2012
  - All 68 plots used!
- 2013 - 2017
  - Plot sign-up managed by Park Board
  - Further expansion on site



# Dedicated Gardeners Yield a Flavorful Harvest!





# Commingle & Organic Recycling

Recycling not only keeps reusable materials out of the landfill, it also helps conserve our natural resources.



**Household  
Organic Recycling**



**Household  
Commingle Recycling**

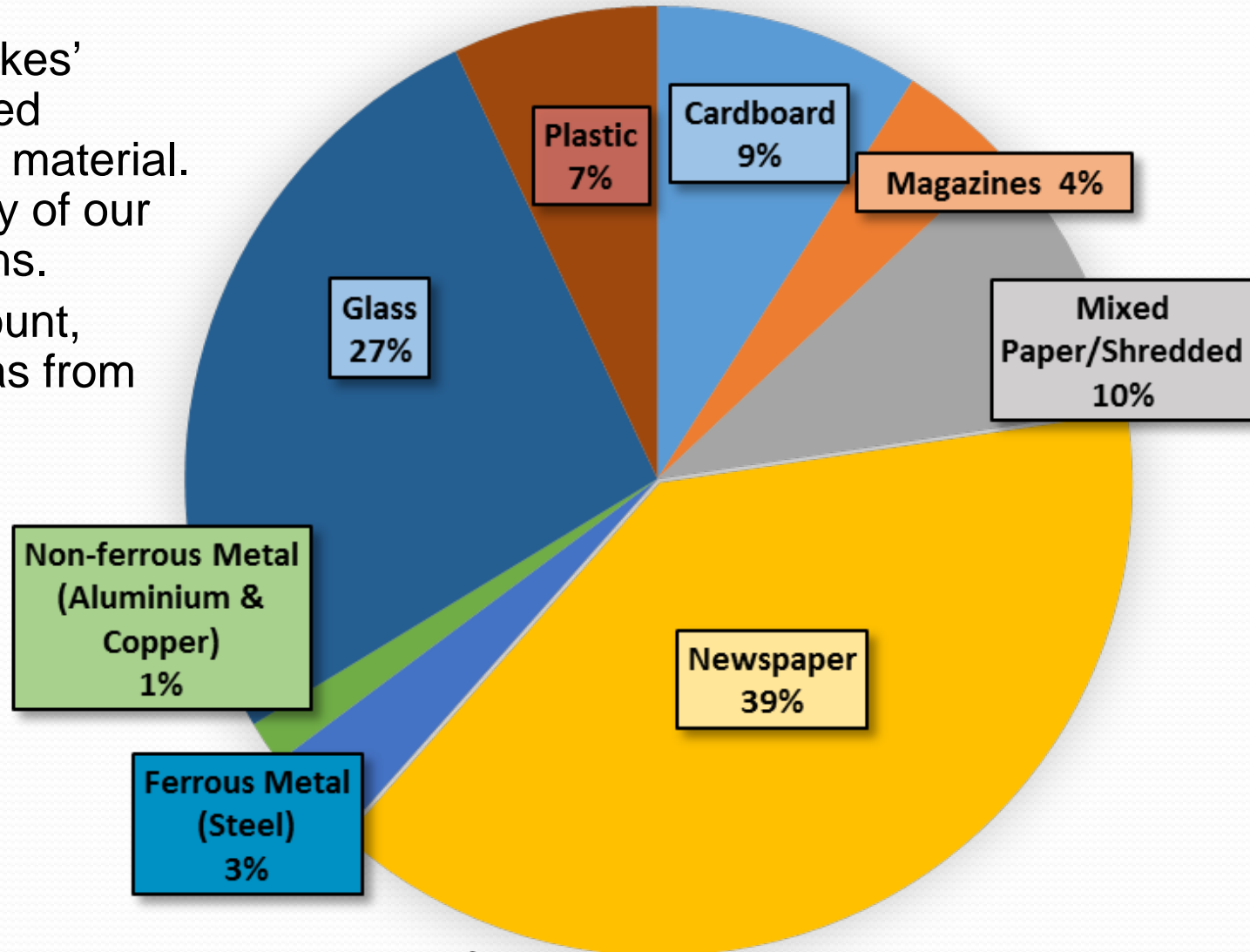


**Park Commingle  
Recycling**



# 2017 Residential Commingle Recycling

- In 2017, Lino Lakes' residents recycled **1,903.10** tons of material. We were just shy of our goal of **2,082** tons.
- Of this total amount, **1,829.62** tons was from curbside.





# Special Material Recycling



**Lino Lakes Residents can recycle hard to and odd items at the [Monthly Recycling Saturday Event](#) and at the [Annual Spring Recycling Day](#).**

# Monthly Recycling Saturday Event



- Every **3<sup>rd</sup> Saturday** of the Month. *Accept August- due to Blue Heron Day.* Small businesses are welcomed!





# Monthly Recycling Saturday

## *What is Accepted*

**Home Appliances  
& Electronics**



**Furniture / Mattress  
Recycling & Donating**

**Tires | Batteries | Scrap Metal**



**Free Document  
Shredding**







# Annual Spring Recycle Day

**Date:** Saturday, May 5<sup>th</sup> 2018  
**Location:** City Public Works Bld.  
1189 Main St.  
**Hours:** 9am to 3pm



**Accepted for** Tires  
**FREE!**



Dry Carpet



Document  
Shredding



## **Additional Accepted Materials**

Appliances | Batteries | Bulbs | Small Engines

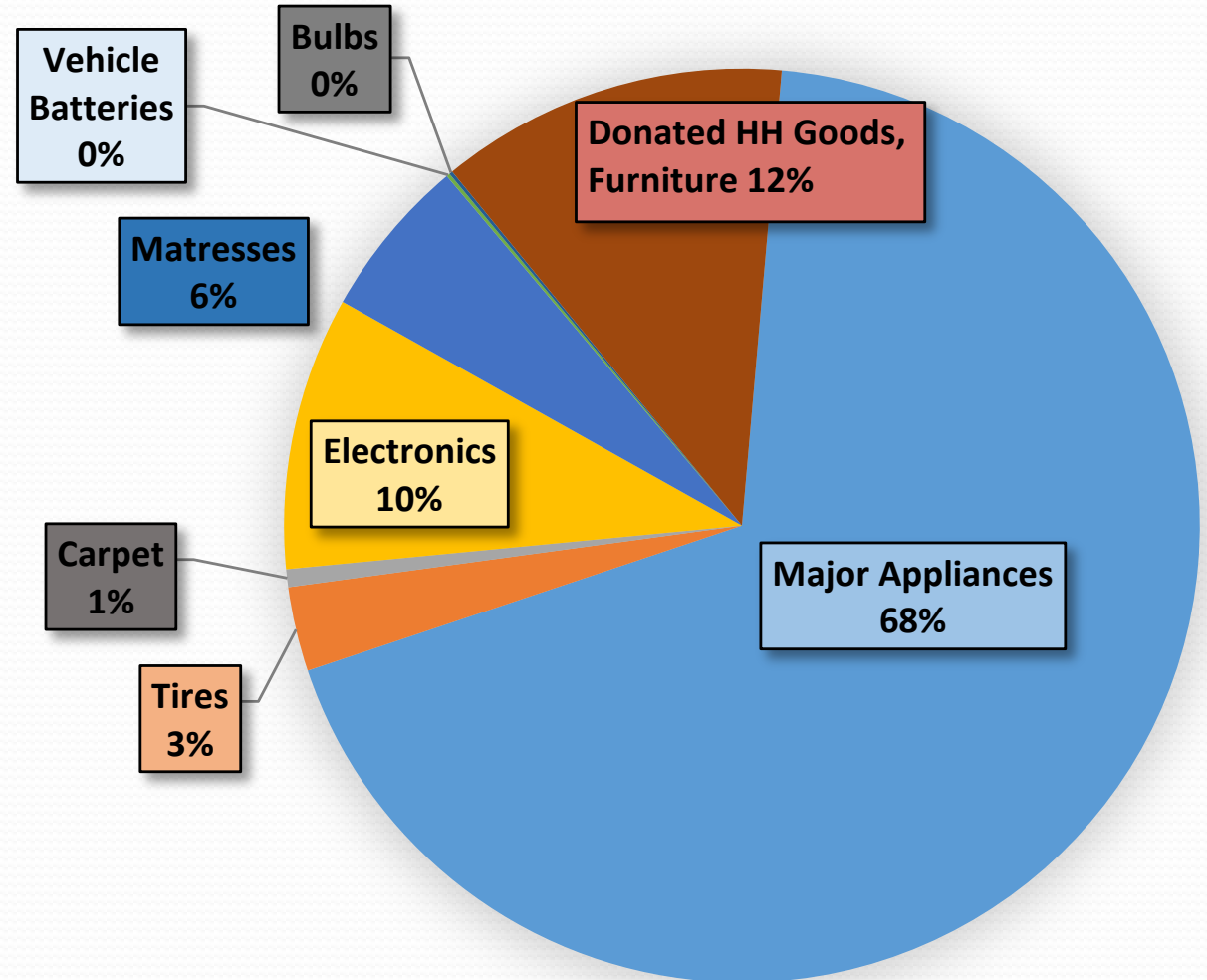
Scrap Metal | Mattresses | Furniture

Donations Accepted: Eye glasses | Hearing Aides | Household Goods | Clothing



# 2017 Special Material Recycled

- In 2017, Lino Lakes' residents recycled **164.98** tons of special material.





# Residential Organic Recycling

Lino Lake Residents have **2** options to divert their food waste from landfills.

**1. Walters Blue Bag Organics® Curbside Program:** Offered to Walters Customers

**2. Organic Site Drop-off Program:** Offered to all Lino Lakes Residents

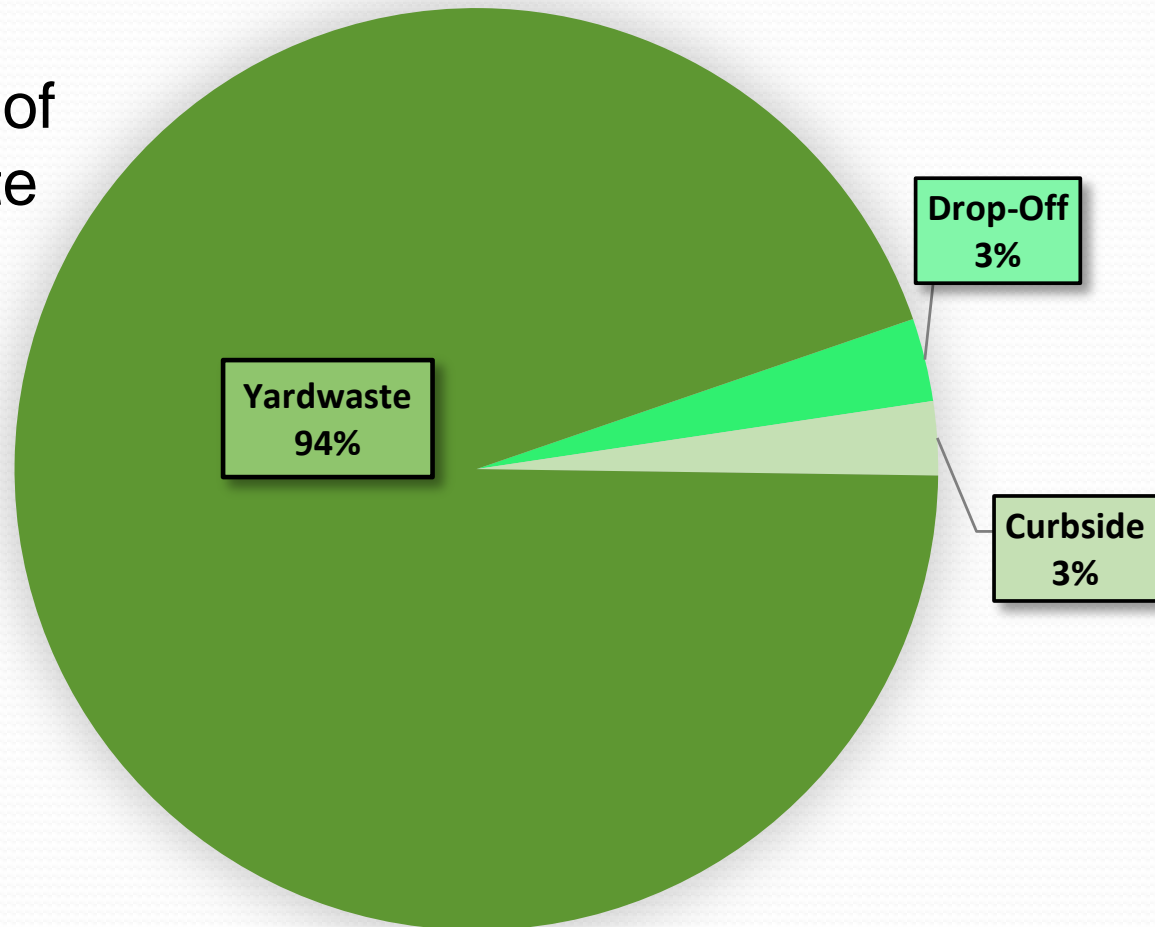


Organics picked up by haulers is sent to a commercial composting facility and turned into compost.



# 2017 Organic & Yardwaste Recycling

- Lino Lakes' residents recycled **283.66** tons of organic and yardwaste material in 2017



# Annual City Events

April



**Earth Day**

May



**Arbor Day**



**Corn Roast**



**Blue Heron Days**



May

**Spring Recycle Day**

# Informational Kiosk for Citizens at City Hall

Pick up some info today to help you learn about:

- DIY rain gardens
- Recycling
- Plantings for saving water
- Events and activities



# Summary

**The City of Lino Lakes Environmental Board is committed to the protection of land and water resources in the city.**

**There are many facets to this, including:**

- **City Staff**
- **Various departments and Programs**
- **Collaboration with:**
  - **The State of Minnesota**
  - **Anoka County**
  - **Watershed Districts**
- **CITIZEN VOLUNTEERS!**

# Partners and Collaboration

- **Rice Creek Watershed District**
- **Anoka County**
- **Neighboring cities**
- **Lino Corrections Department**
- **SHEP**
- **Scouts**
- **ISD #12 Centennial Schools**
- **Forest Lake School District**



# Environmental Board Members

## 2017/2018 Advisory Members

- Paula Andrzejewski
- Steve Heiskary
- Shawn Holmes
- Liz Kaufenberg
- Nancie Klebba
- Alex Schwartz
- John Sullivan

## Lino Lakes Environmental Board Staff

- Marty Asleson, Environmental Coordinator  
Email: [marty.asleson@ci.lino-lakes.mn.us](mailto:marty.asleson@ci.lino-lakes.mn.us)
- Sayard Schultz, Recycling Intern  
Email: [recyclingintern@ci.lino-lakes.mn.us](mailto:recyclingintern@ci.lino-lakes.mn.us)
- Mary Fogarty, Secretary



Ms. Jin stated that only Simple Recycling bags that the company provides are used.

Mr. Asleson would like to preview the mailer before Simple Recycling has sent out to the residents.

Mr. Heiskary would like the contract presented to the city council

Mr. Sullivan MOTION to send this to city council for their consideration in supporting the concept. Ms. Andrzejewski supported the motion.

## 6. DISCUSSION ITEMS

### A. Earth Day Summary

Mr. Heiskary believe that it was better attended than in years past. He also suggested to take a picture of the finished seeds balls and to have the elm bark beetle visible.

Ms. Anjdrzejewski said that the other crafts were not as inviting and suggested that we just do the seed balls. Also two of her students presented their work on disappearing bees and edible plants.

Ms. Jin mentioned that the people that wanted to sign up for organics, not many from Lino Lakes, so they were sent to the Anoka County table. To date 244 Lino Lakes have signed up for organics.

Also Waste Management and Walters are talking about curb side organic pick up so we will see what happens.

The survey was a good idea

Ms. Kaufenberg asked about the Organic waste cans if this summer if the pickups would be more frequent because of smells and pests.

Ms. Jin said that the cost is the same no matter the number of cans. Where the cost increase comes is the frequently of times they come to empty the cans.

### B. Arbor Day

Rice Lake Elementary School at 2:30pm  
Mayor Reinart will be there to read the proclaimion

### C. Annual Recylcing Day and Tree Hand Out

Is on Saturday, May 6 from 9:00am – 2:00pm





Reduce Reuse Recycle!



CUSTOM  
INK